

ONE BEDROOM	TYPE 1-1.a (T)
UNIT NO.	305E
SUITE AREA	73.3m <sup>2</sup> / 788.99ft <sup>2</sup>
BALCONY AND TERRACE AREA	49.1m <sup>2</sup> / 528.5ft <sup>2</sup>
TOTAL AREA	122.4m <sup>2</sup> / 1317.5ft <sup>2</sup>

FLOOR 03

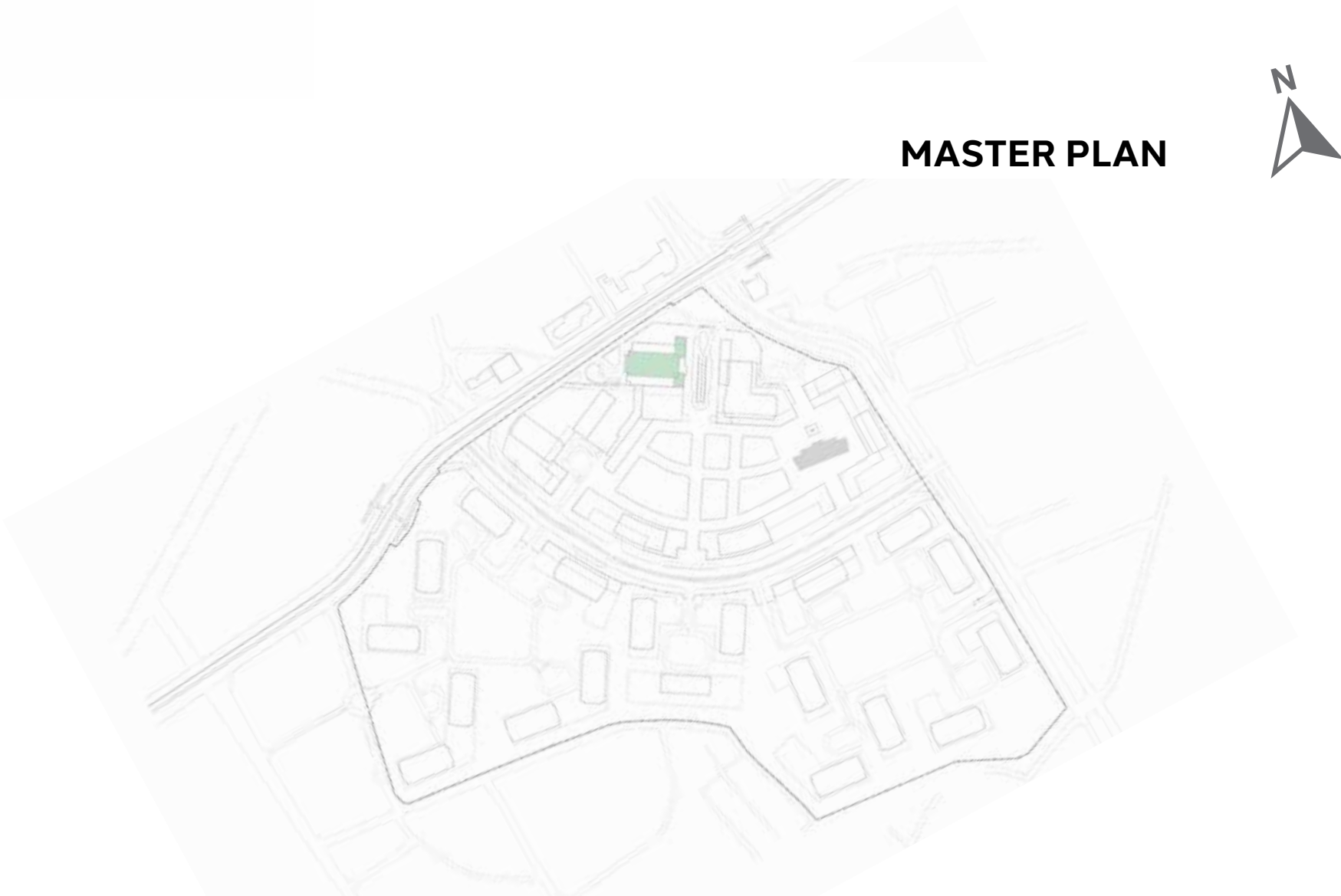


MASTER PLAN





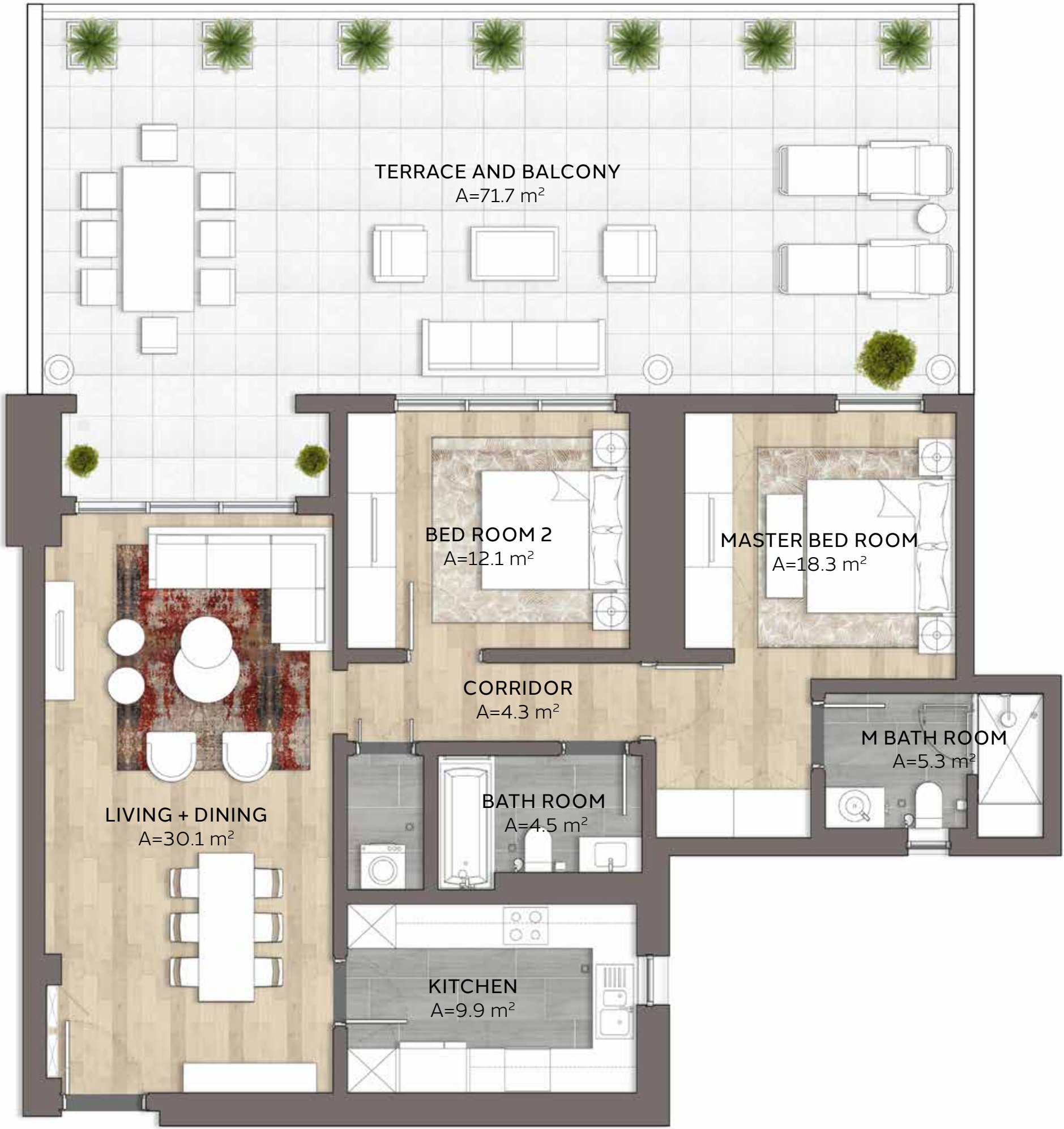
ONE BEDROOM	TYPE 1-1.b (T)
UNIT NO.	307W
SUITE AREA	73.2m <sup>2</sup> / 787.9ft <sup>2</sup>
BALCONY AND TERRACE AREA	49.2m <sup>2</sup> / 529.6ft <sup>2</sup>
TOTAL AREA	122.4m <sup>2</sup> / 1317.5ft <sup>2</sup>





TWO BEDROOM	TYPE 2-1.a (T)
UNIT NO.	303E
SUITE AREA	106.7m <sup>2</sup> / 1148.5ft <sup>2</sup>
BALCONY AND TERRACE AREA	71.7m <sup>2</sup> / 771.8ft <sup>2</sup>
TOTAL AREA	178.4m <sup>2</sup> / 1,920.3ft <sup>2</sup>

FLOOR 03



MASTER PLAN



**Disclaimer:**  
**1.** All room dimensions are measured to structural elements and exclude all finishes and construction tolerances. **2.** All dimensions have been provided by our consultant architects. **3.** All materials, dimensions and drawings are approximate. Information is subject to change without notice. **4.** Actual suite area may vary from the stated area. Drawings not to scale. The developer reserves the right to make revisions. **5.** Calculation of suite area is measured as the area bounded by the centre line of the demising or partition walls separating one unit from another unit, the exterior face of all exterior walls, and the exterior face of the corridor wall enclosing the adjoining unit. **6.** Calculation of balcony area is measured as the area bounded by the centre line of the demising or partition walls separating one unit from another unit, the out most face of the enclosing guard and the external face of the unit adjoining the balcony. **7.** The units are measured at typical floor in the building. Columns may vary in size depending on the floor level.



TWO BEDROOM

TYPE 2-1.b (T)

UNIT NO.

304E

SUITE AREA

105.4m<sup>2</sup> / 1134.5ft<sup>2</sup>

BALCONY AND  
TERRACE AREA

71.3m<sup>2</sup> / 767.5ft<sup>2</sup>

TOTAL AREA

176.7m<sup>2</sup> / 1,902ft<sup>2</sup>

FLOOR 03



304E



MASTER PLAN





TWO BEDROOM

**TYPE 2-1.c (T)**

UNIT NO.

308W

SUITE AREA

**106.2m<sup>2</sup> / 1143.1ft<sup>2</sup>**

BALCONY AND  
TERRACE AREA

**73.6m<sup>2</sup> / 792.2ft<sup>2</sup>**

TOTAL AREA

**179.8m<sup>2</sup> / 1,935.3ft<sup>2</sup>**

FLOOR 03



MASTER PLAN



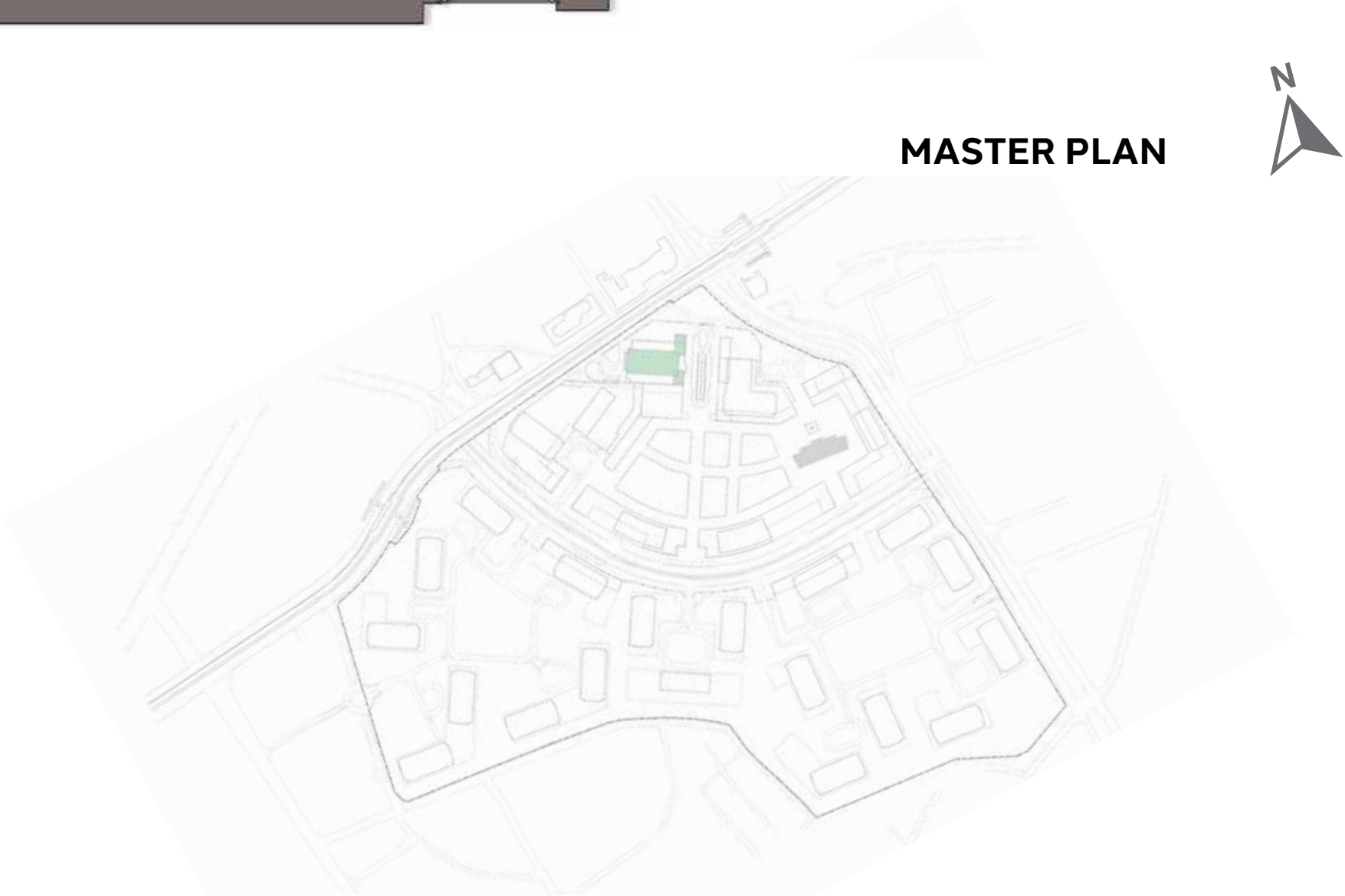
**Disclaimer:**

**1.** All room dimensions are measured to structural elements and exclude all finishes and construction tolerances. **2.** All dimensions have been provided by our consultant architects. **3.** All materials, dimensions and drawings are approximate. Information is subject to change without notice. **4.** Actual suite area may vary from the stated area. Drawings not to scale. The developer reserves the right to make revisions. **5.** Calculation of suite area is measured as the area bounded by the centre line of the demising or partition walls separating one unit from another unit, the exterior face of all exterior walls, and the exterior face of the corridor wall enclosing the adjoining unit. **6.** Calculation of balcony area is measured as the area bounded by the centre line of the demising or partition walls separating one unit from another unit, the out most face of the enclosing guard and the external face of the unit adjoining the balcony. **7.** The units are measured at typical floor in the building. Columns may vary in size depending on the floor level.





TWO BEDROOM	TYPE 2-1.d (T)
UNIT NO.	309W
SUITE AREA	106.9m <sup>2</sup> / 1150.7ft <sup>2</sup>
BALCONY AND TERRACE AREA	71.5m <sup>2</sup> / 769.6ft <sup>2</sup>
TOTAL AREA	178.4m <sup>2</sup> / 1920.3ft <sup>2</sup>

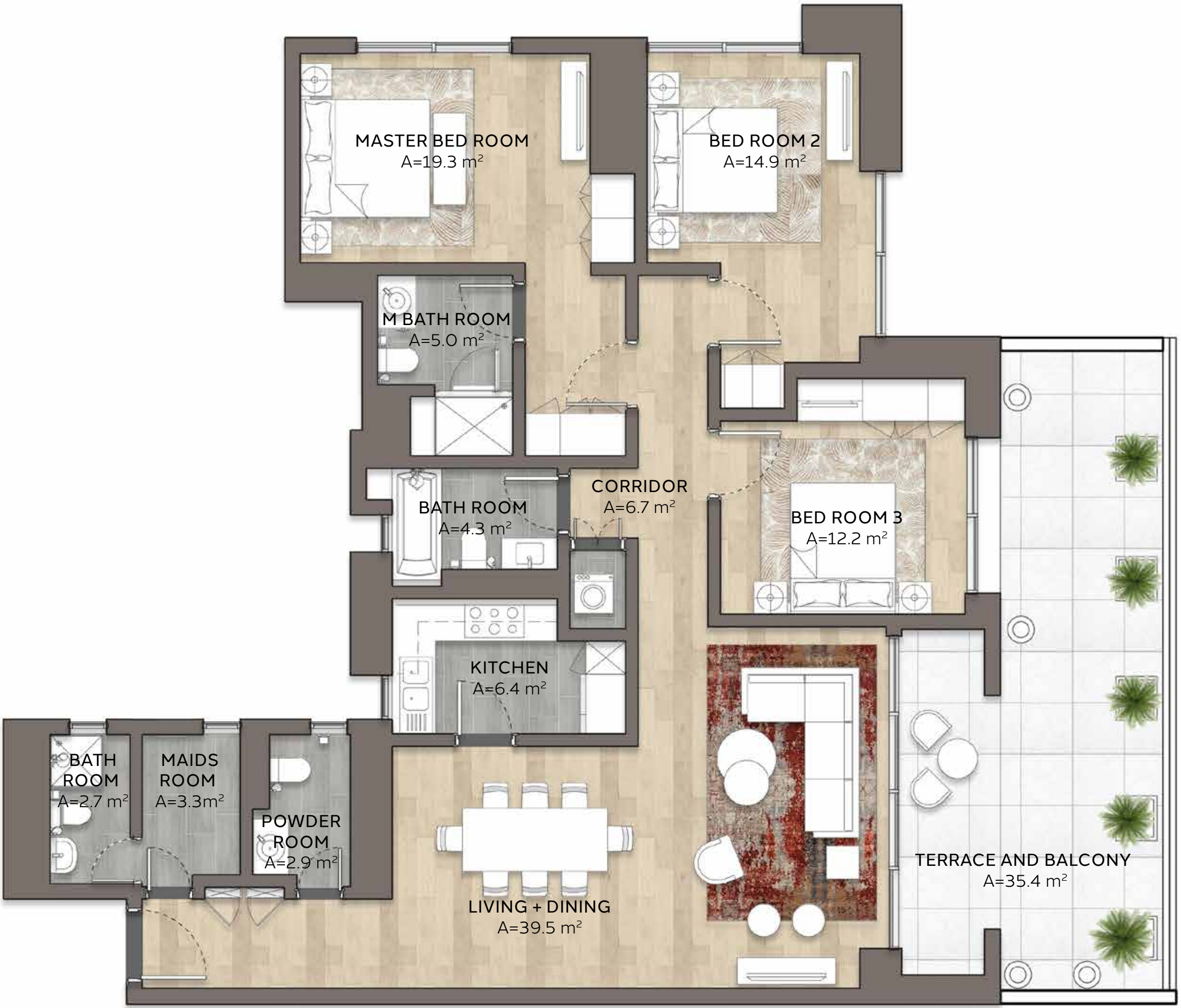


**Disclaimer:**  
1. All room dimensions are measured to structural elements and exclude all finishes and construction tolerances. 2. All dimensions have been provided by our consultant architects. 3. All materials, dimensions and drawings are approximate. Information is subject to change without notice. 4. Actual suite area may vary from the stated area. Drawings not to scale. The developer reserves the right to make revisions. 5. Calculation of suite area is measured as the area bounded by the centre line of the demising or partition walls separating one unit from another unit, the exterior face of all exterior walls, and the exterior face of the corridor wall enclosing the adjoining unit. 6. Calculation of balcony area is measured as the area bounded by the centre line of the demising or partition walls separating one unit from another unit, the out most face of the enclosing guard and the external face of the unit adjoining the balcony. 7. The units are measured at typical floor in the building. Columns may vary in size depending on the floor level.



THREE BEDROOM	TYPE 3-1.a (T)
UNIT NO.	301E
SUITE AREA	152.4m <sup>2</sup> / 1640.4ft <sup>2</sup>
BALCONY AND TERRACE AREA	35.4m <sup>2</sup> / 381ft <sup>2</sup>
TOTAL AREA	187.8m <sup>2</sup> / 2021.4ft <sup>2</sup>

FLOOR 03



MASTER PLAN

**Disclaimer:**  
**1.** All room dimensions are measured to structural elements and exclude all finishes and construction tolerances. **2.** All dimensions have been provided by our consultant architects. **3.** All materials, dimensions and drawings are approximate. Information is subject to change without notice. **4.** Actual suite area may vary from the stated area. Drawings not to scale. The developer reserves the right to make revisions. **5.** Calculation of suite area is measured as the area bounded by the centre line of the demising or partition walls separating one unit from another unit, the exterior face of all exterior walls, and the exterior face of the corridor wall enclosing the adjoining unit. **6.** Calculation of balcony area is measured as the area bounded by the centre line of the demising or partition walls separating one unit from another unit, the out most face of the enclosing guard and the external face of the unit adjoining the balcony. **7.** The units are measured at typical floor in the building. Columns may vary in size depending on the floor level.



THREE BEDROOM	TYPE 3-1.b (T)
UNIT NO.	302E
SUITE AREA	151.9m <sup>2</sup> / 1,635ft <sup>2</sup>
BALCONY AND TERRACE AREA	123.2m <sup>2</sup> / 1,326.1ft <sup>2</sup>
TOTAL AREA	275.1m <sup>2</sup> / 2961.1ft <sup>2</sup>

FLOOR 03





302E



MASTER PLAN





**Disclaimer:**

**1.** All room dimensions are measured to structural elements and exclude all finishes and construction tolerances. **2.** All dimensions have been provided by our consultant architects. **3.** All materials, dimensions and drawings are approximate. Information is subject to change without notice. **4.** Actual suite area may vary from the stated area. Drawings not to scale. The developer reserves the right to make revisions. **5.** Calculation of suite area is measured as the area bounded by the centre line of the demising or partition walls separating one unit from another unit, the exterior face of all exterior walls, and the exterior face of the corridor wall enclosing the adjoining unit. **6.** Calculation of balcony area is measured as the area bounded by the centre line of the demising or partition walls separating one unit from another unit, the out most face of the enclosing guard and the external face of the unit adjoining the balcony. **7.** The units are measured at typical floor in the building. Columns may vary in size depending on the floor level.



THREE BEDROOM

TYPE 3-1.c (T)

UNIT NO.

310W

SUITE AREA

152m<sup>2</sup> / 1636.1ft<sup>2</sup>

BALCONY AND  
TERRACE AREA

53.8m<sup>2</sup> / 579.1ft<sup>2</sup>

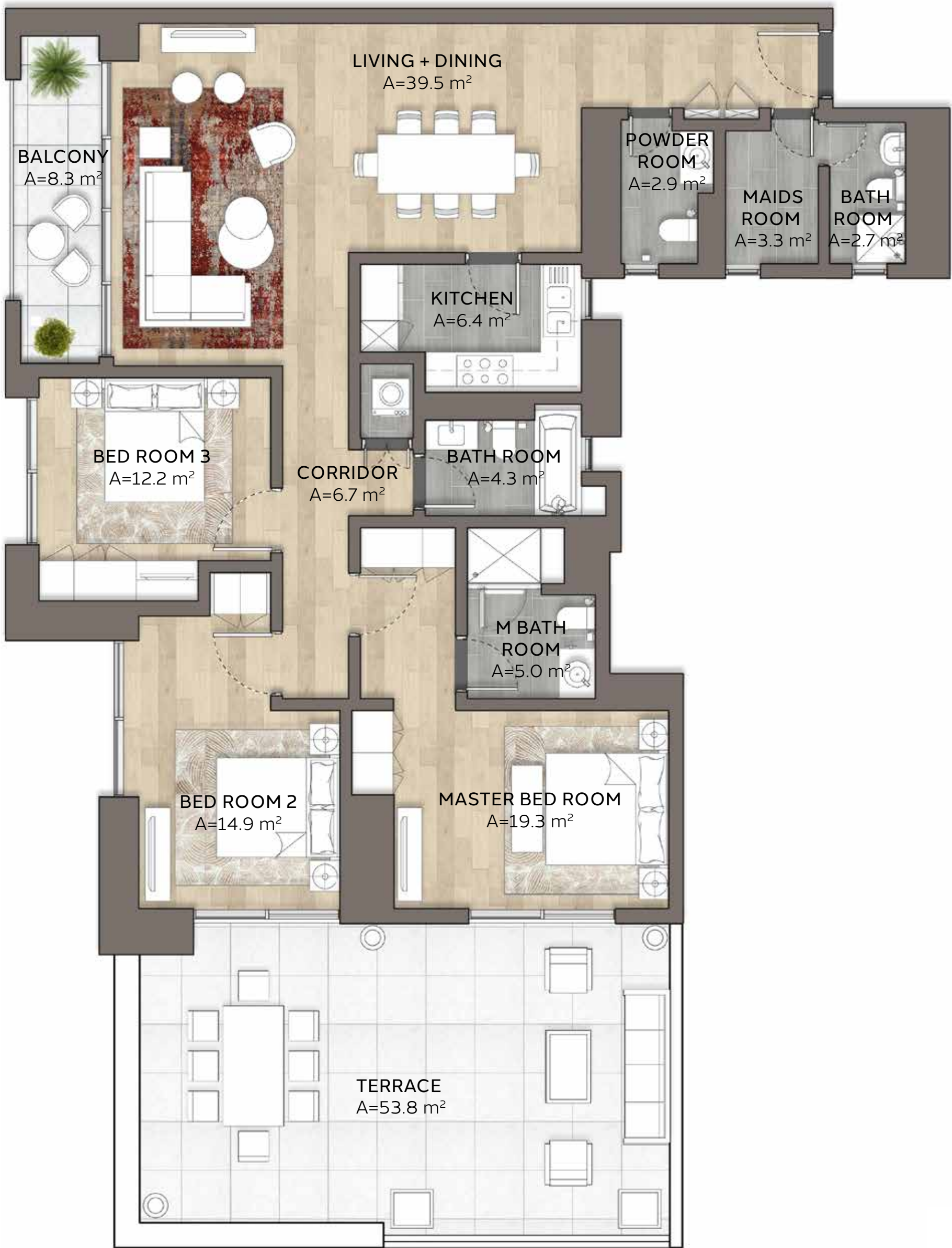
TOTAL AREA

205.8m<sup>2</sup> / 2,215.2ft<sup>2</sup>

FLOOR 03



310W



MASTER PLAN



**Disclaimer:**  
1. All room dimensions are measured to structural elements and exclude all finishes and construction tolerances. 2. All dimensions have been provided by our consultant architects. 3. All materials, dimensions and drawings are approximate. Information is subject to change without notice. 4. Actual suite area may vary from the stated area. Drawings not to scale. The developer reserves the right to make revisions. 5. Calculation of suite area is measured as the area bounded by the centre line of the demising or partition walls separating one unit from another unit, the exterior face of all exterior walls, and the exterior face of the corridor wall enclosing the adjoining unit. 6. Calculation of balcony area is measured as the area bounded by the centre line of the demising or partition walls separating one unit from another unit, the out most face of the enclosing guard and the external face of the unit adjoining the balcony. 7. The units are measured at typical floor in the building. Columns may vary in size depending on the floor level.



THREE BEDROOM	TYPE 3-1.d (T)
UNIT NO.	311W
SUITE AREA	151.2m <sup>2</sup> / 1,627.5ft <sup>2</sup>
BALCONY AND TERRACE AREA	33.6m <sup>2</sup> / 361.7ft <sup>2</sup>
TOTAL AREA	184.8m <sup>2</sup> / 1989.2ft <sup>2</sup>

FLOOR 03



MASTER PLAN

**Disclaimer:**

**1.** All room dimensions are measured to structural elements and exclude all finishes and construction tolerances. **2.** All dimensions have been provided by our consultant architects. **3.** All materials, dimensions and drawings are approximate. Information is subject to change without notice. **4.** Actual suite area may vary from the stated area. Drawings not to scale. The developer reserves the right to make revisions. **5.** Calculation of suite area is measured as the area bounded by the centre line of the demising or partition walls separating one unit from another unit, the exterior face of all exterior walls, and the exterior face of the corridor wall enclosing the adjoining unit. **6.** Calculation of balcony area is measured as the area bounded by the centre line of the demising or partition walls separating one unit from another unit, the out most face of the enclosing guard and the external face of the unit adjoining the balcony. **7.** The units are measured at typical floor in the building. Columns may vary in size depending on the floor level.



THREE BEDROOM

TYPE 3-2.a (T)

UNIT NO.

306W

SUITE AREA

151.4m<sup>2</sup> / 1629.6ft<sup>2</sup>

BALCONY AND  
TERRACE AREA

99.7m<sup>2</sup> / 1,073.2ft<sup>2</sup>

TOTAL AREA

251.1m<sup>2</sup> / 2702.8ft<sup>2</sup>

FLOOR 03



MASTER PLAN

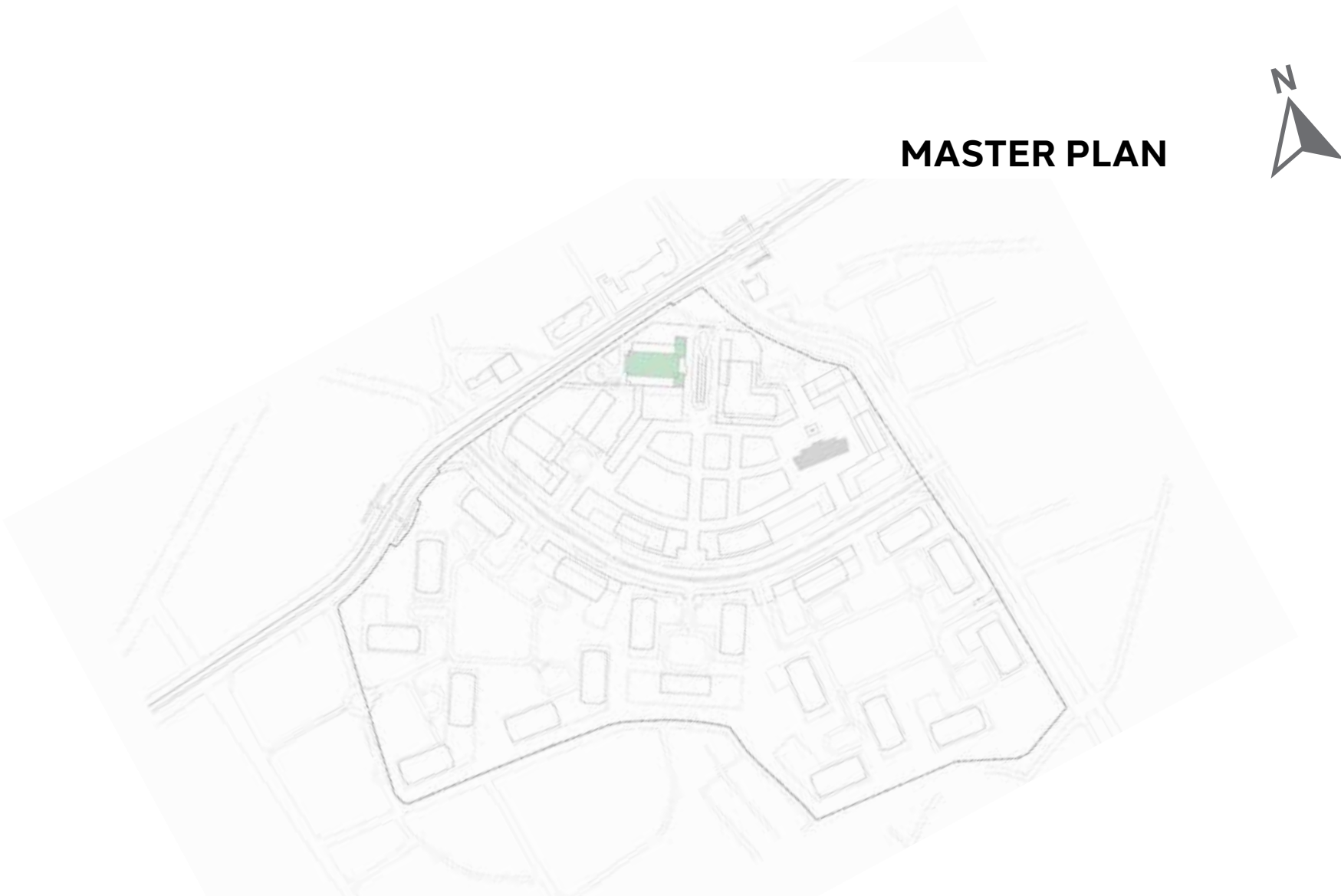




ONE BEDROOM	TYPE 1-1.a
UNIT NO.	405E, 505E, 605E, 705E, 805E, 905E, 1005E, 1105E, 1205E, 1305E, 1405E, 1505E
SUITE AREA	73.3m <sup>2</sup> / 788.9ft <sup>2</sup>
BALCONY AREA	5.7m <sup>2</sup> / 61.4ft <sup>2</sup>
TOTAL AREA	79m <sup>2</sup> / 850.3ft <sup>2</sup>

FLOOR 04-15

N



MASTER PLAN

N



ONE BEDROOM

TYPE 1-1.b

UNIT NO.

407W, 507W, 607W, 707W,  
807W, 907W, 1007W,  
1107W, 1207W, 1307W,  
1407W, 1507W

SUITE AREA

73.2m<sup>2</sup> / 787.9ft<sup>2</sup>

BALCONY AREA

5.6m<sup>2</sup> / 60.2ft<sup>2</sup>

TOTAL AREA

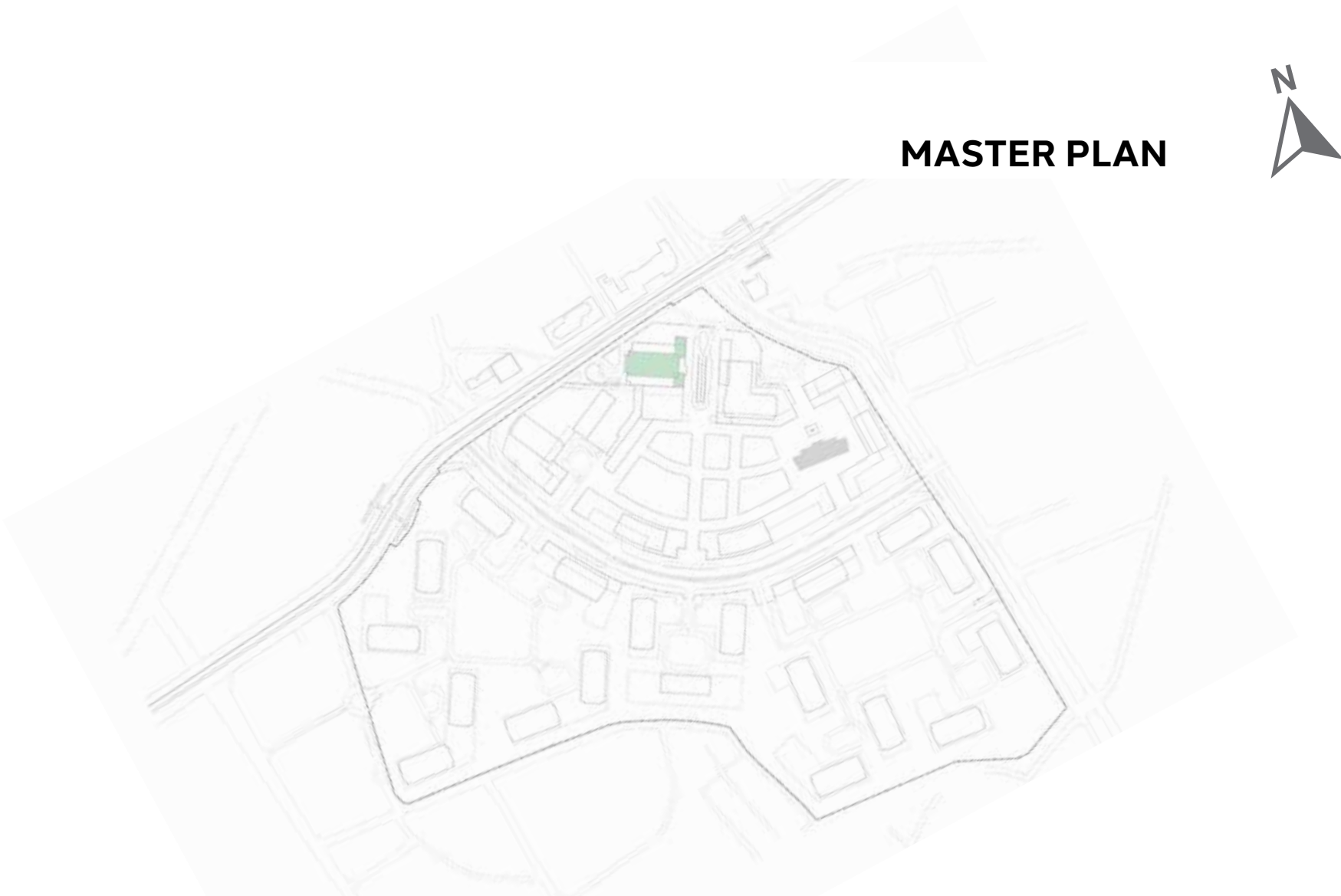
78.8m<sup>2</sup> / 848.1ft<sup>2</sup>



FLOOR 04-15



MASTER PLAN





TWO BEDROOM

**TYPE 2-1.a**

UNIT NO.

403E, 503E, 603E, 703E,  
803E, 903E, 1003E, 1103E,  
1203E, 1303E, 1403E,  
1503E

SUITE AREA

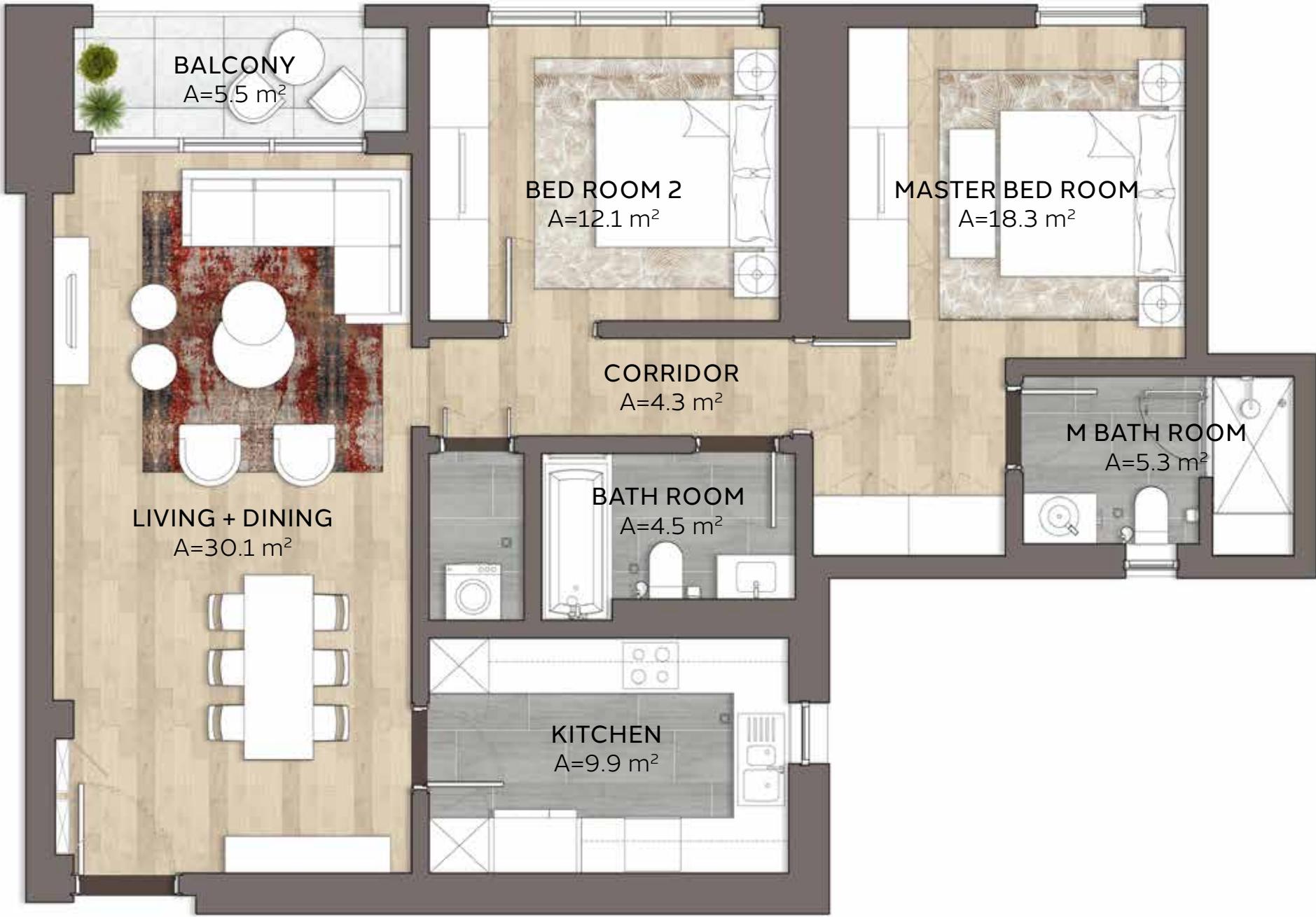
**106.7m<sup>2</sup> / 1148.5ft<sup>2</sup>**

BALCONY AREA

**5.5m<sup>2</sup> / 59.2ft<sup>2</sup>**

TOTAL AREA

**112.2m<sup>2</sup> / 1207.7ft<sup>2</sup>**



FLOOR 04-15



MASTER PLAN





TWO BEDROOM

TYPE 2-1.b

UNIT NO.

404E, 504E, 604E, 704E,  
804E, 904E, 1004E, 1104E,  
1204E, 1304E, 1404E,  
1504E

SUITE AREA

105.4m<sup>2</sup> / 1134.5ft<sup>2</sup>

BALCONY AREA

5.5m<sup>2</sup> / 59.2ft<sup>2</sup>

TOTAL AREA

110.9m<sup>2</sup> / 1193.7ft<sup>2</sup>



FLOOR 04-15



MASTER PLAN




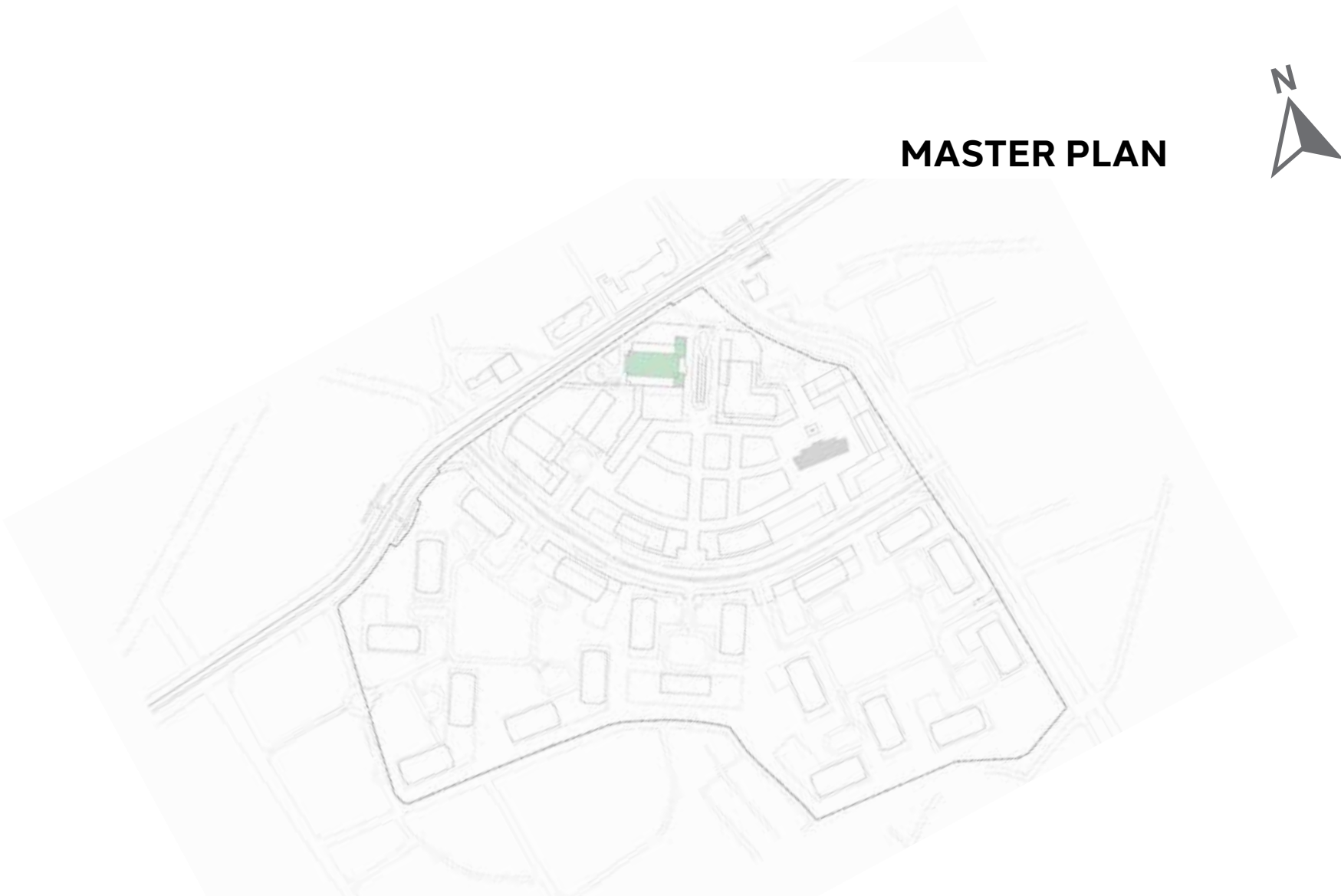
**Disclaimer:**  
**1.** All room dimensions are measured to structural elements and exclude all finishes and construction tolerances. **2.** All dimensions have been provided by our consultant architects. **3.** All materials, dimensions and drawings are approximate. Information is subject to change without notice. **4.** Actual suite area may vary from the stated area. Drawings not to scale. The developer reserves the right to make revisions. **5.** Calculation of suite area is measured as the area bounded by the centre line of the demising or partition walls separating one unit from another unit, the exterior face of all exterior walls, and the exterior face of the corridor wall enclosing the adjoining unit. **6.** Calculation of balcony area is measured as the area bounded by the centre line of the demising or partition walls separating one unit from another unit, the out most face of the enclosing guard and the external face of the unit adjoining the balcony. **7.** The units are measured at typical floor in the building. Columns may vary in size depending on the floor level.



TWO BEDROOM	TYPE 2-1.c
UNIT NO.	408W, 508W, 608W, 708W, 808W, 908W, 1008W, 1108W, 1208W, 1308W, 1408W, 1508W
SUITE AREA	106.2m <sup>2</sup> / 1143.1ft <sup>2</sup>
BALCONY AREA	5.5m <sup>2</sup> / 59.2ft <sup>2</sup>
TOTAL AREA	111.7m <sup>2</sup> / 1202.3ft <sup>2</sup>

FLOOR 04-15





MASTER PLAN





TWO BEDROOM

TYPE 2-1.d

UNIT NO.

409W, 509W, 609W,  
709W, 809W, 909W,  
1009W, 1109W, 1209W,  
1309W, 1409W, 1509W

SUITE AREA

106.9m<sup>2</sup> / 1150.6ft<sup>2</sup>

BALCONY AREA

5.5m<sup>2</sup> / 59.2ft<sup>2</sup>

TOTAL AREA

112.4m<sup>2</sup> / 1209.8ft<sup>2</sup>



FLOOR 04-15



MASTER PLAN





THREE BEDROOM	TYPE 3-1.a
UNIT NO.	401E, 501E, 601E, 701E, 801E, 901E, 1001E, 1101E, 1201E, 1301E, 1401E, 1501E
SUITE AREA	152.4m <sup>2</sup> / 1,640.4ft <sup>2</sup>
BALCONY AREA	7.9m <sup>2</sup> / 85ft <sup>2</sup>
TOTAL AREA	160.3m <sup>2</sup> / 1725.4ft <sup>2</sup>

FLOOR 04-15



MASTER PLAN



**Disclaimer:**  
1. All room dimensions are measured to structural elements and exclude all finishes and construction tolerances. 2. All dimensions have been provided by our consultant architects. 3. All materials, dimensions and drawings are approximate. Information is subject to change without notice. 4. Actual suite area may vary from the stated area. Drawings not to scale. The developer reserves the right to make revisions. 5. Calculation of suite area is measured as the area bounded by the centre line of the demising or partition walls separating one unit from another unit, the exterior face of all exterior walls, and the exterior face of the corridor wall enclosing the adjoining unit. 6. Calculation of balcony area is measured as the area bounded by the centre line of the demising or partition walls separating one unit from another unit, the out most face of the enclosing guard and the external face of the unit adjoining the balcony. 7. The units are measured at typical floor in the building. Columns may vary in size depending on the floor level.



THREE BEDROOM

TYPE 3-1.b

UNIT NO.

402E, 502E, 602E, 702E,  
802E, 902E, 1002E, 1102E,  
1202E, 1302E, 1402E,  
1502E

SUITE AREA

151.9m<sup>2</sup> / 1,635ft<sup>2</sup>

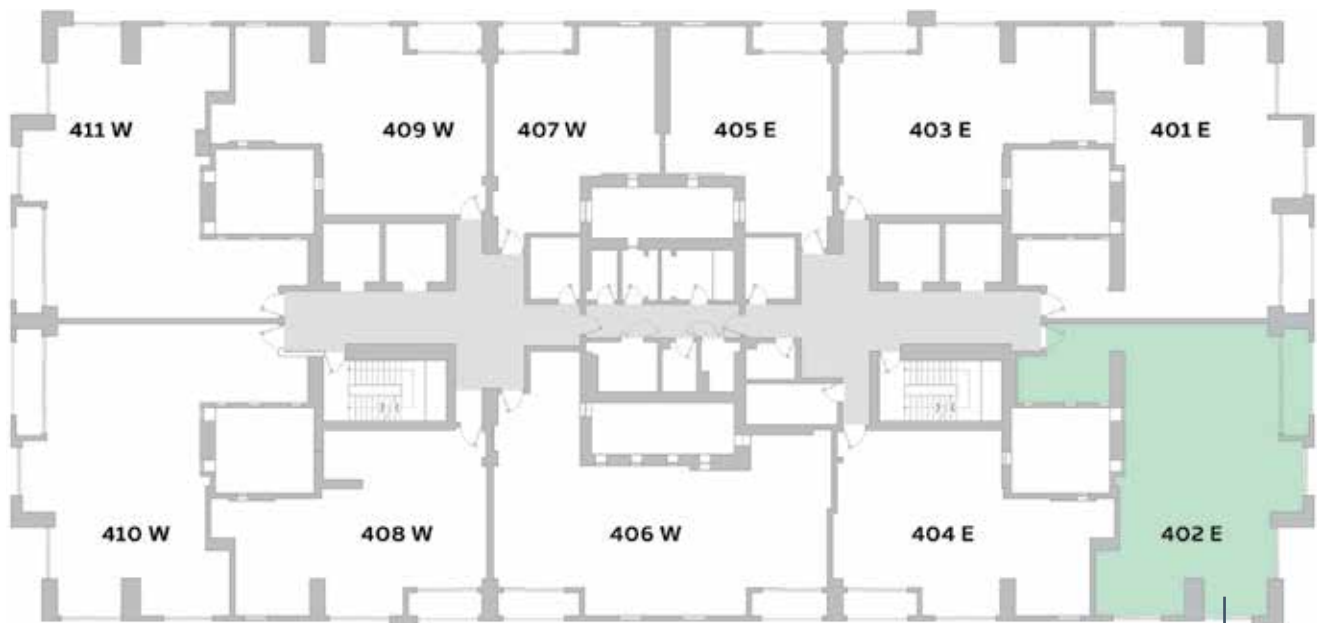
BALCONY AREA

8.7m<sup>2</sup> / 93.6ft<sup>2</sup>

TOTAL AREA

160.6m<sup>2</sup> / 1,728.6ft<sup>2</sup>

FLOOR 04-15



402E



MASTER PLAN



**Disclaimer:**

1. All room dimensions are measured to structural elements and exclude all finishes and construction tolerances. 2. All dimensions have been provided by our consultant architects. 3. All materials, dimensions and drawings are approximate. Information is subject to change without notice. 4. Actual suite area may vary from the stated area. Drawings not to scale. The developer reserves the right to make revisions. 5. Calculation of suite area is measured as the area bounded by the centre line of the demising or partition walls separating one unit from another unit, the exterior face of all exterior walls, and the exterior face of the corridor wall enclosing the adjoining unit. 6. Calculation of balcony area is measured as the area bounded by the centre line of the demising or partition walls separating one unit from another unit, the out most face of the enclosing guard and the external face of the unit adjoining the balcony. 7. The units are measured at typical floor in the building. Columns may vary in size depending on the floor level.



THREE BEDROOM	TYPE 3-1.c
UNIT NO.	410W, 510W, 610W, 710W, 810W, 910W, 1010W, 1110W, 1210W, 1310W, 1410W, 1510W
SUITE AREA	152m <sup>2</sup> / 1,636.1ft <sup>2</sup>
BALCONY AREA	8.5m <sup>2</sup> / 91.5ft <sup>2</sup>
TOTAL AREA	160.5m <sup>2</sup> / 1,727.6ft <sup>2</sup>

FLOOR 04-15



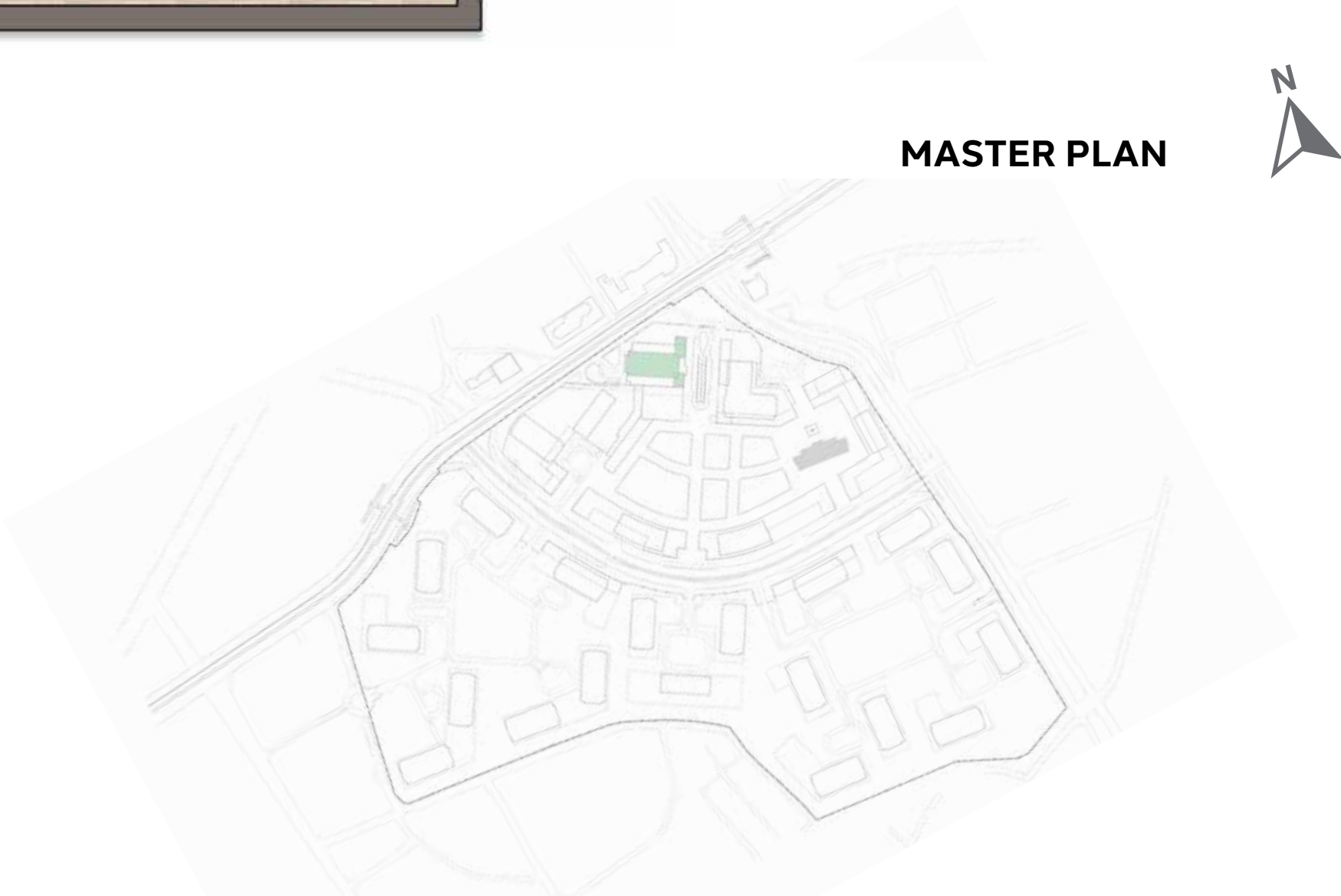
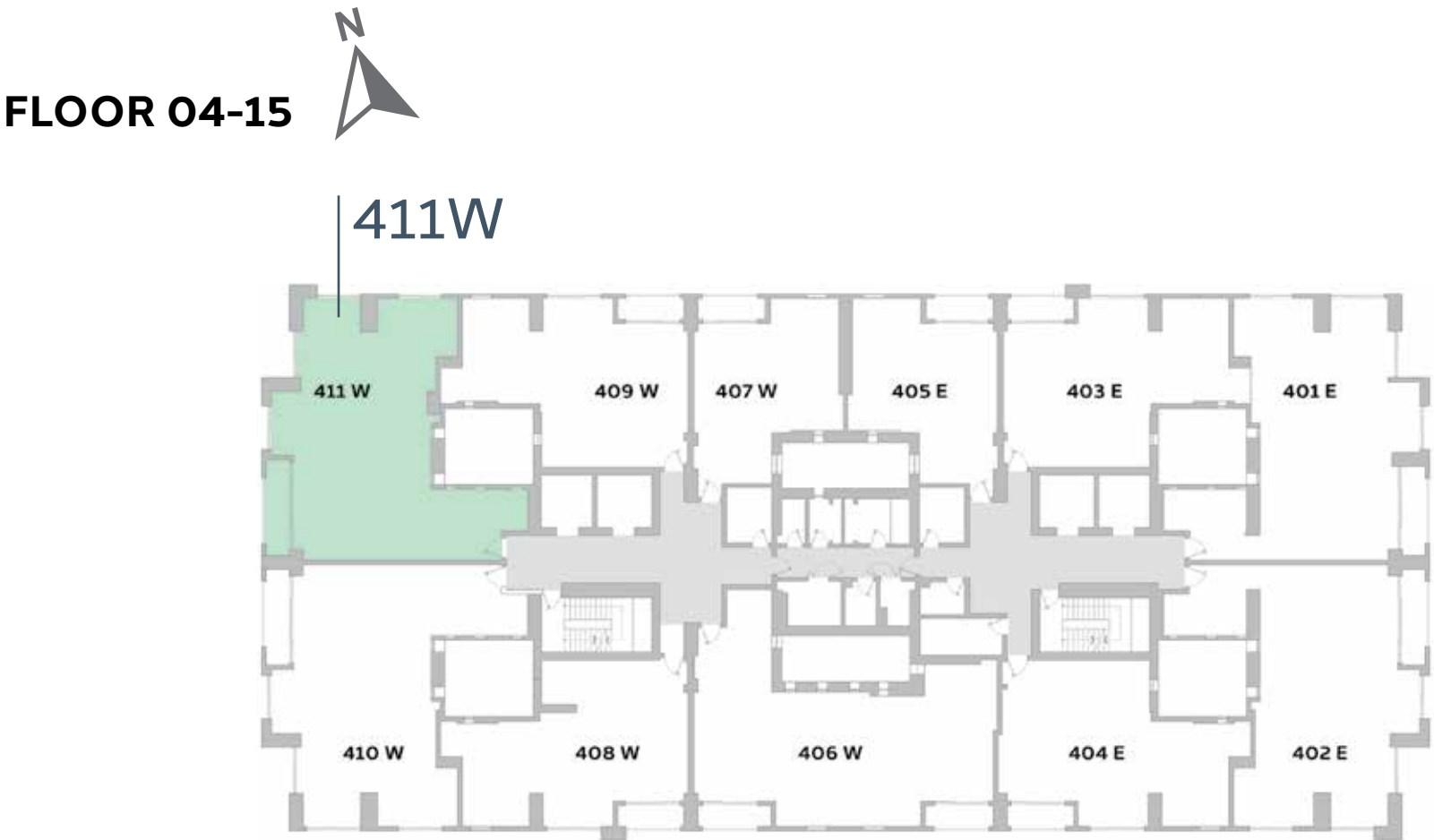
MASTER PLAN



**Disclaimer:**  
1. All room dimensions are measured to structural elements and exclude all finishes and construction tolerances. 2. All dimensions have been provided by our consultant architects. 3. All materials, dimensions and drawings are approximate. Information is subject to change without notice. 4. Actual suite area may vary from the stated area. Drawings not to scale. The developer reserves the right to make revisions. 5. Calculation of suite area is measured as the area bounded by the centre line of the demising or partition walls separating one unit from another unit, the exterior face of all exterior walls, and the exterior face of the corridor wall enclosing the adjoining unit. 6. Calculation of balcony area is measured as the area bounded by the centre line of the demising or partition walls separating one unit from another unit, the out most face of the enclosing guard and the external face of the unit adjoining the balcony. 7. The units are measured at typical floor in the building. Columns may vary in size depending on the floor level.



THREE BEDROOM	TYPE 3-1.d
UNIT NO.	411W, 511W, 611W, 711W, 811W, 911W, 1011W, 1111W, 1211W, 1311W, 1411W, 1511W
SUITE AREA	151.2m <sup>2</sup> / 1,627.5ft <sup>2</sup>
BALCONY AREA	8.4m <sup>2</sup> / 90.4ft <sup>2</sup>
TOTAL AREA	159.6m <sup>2</sup> / 1,717.9ft <sup>2</sup>



**Disclaimer:**

**1.** All room dimensions are measured to structural elements and exclude all finishes and construction tolerances. **2.** All dimensions have been provided by our consultant architects. **3.** All materials, dimensions and drawings are approximate. Information is subject to change without notice. **4.** Actual suite area may vary from the stated area. Drawings not to scale. The developer reserves the right to make revisions. **5.** Calculation of suite area is measured as the area bounded by the centre line of the demising or partition walls separating one unit from another unit, the exterior face of all exterior walls, and the exterior face of the corridor wall enclosing the adjoining unit. **6.** Calculation of balcony area is measured as the area bounded by the centre line of the demising or partition walls separating one unit from another unit, the out most face of the enclosing guard and the external face of the unit adjoining the balcony. **7.** The units are measured at typical floor in the building. Columns may vary in size depending on the floor level.



THREE BEDROOM

**TYPE 3-2.a**

UNIT NO.

406W, 506W, 606W,  
706W, 806W, 906W,  
1006W, 1106W, 1206W,  
1306W, 1406W, 1506W

SUITE AREA

**151.4m<sup>2</sup> / 1,629.7ft<sup>2</sup>**

BALCONY AREA

**11.6m<sup>2</sup> / 124.8ft<sup>2</sup>**

TOTAL AREA

**163m<sup>2</sup> / 1,754.5ft<sup>2</sup>**



FLOOR 04-15



MASTER PLAN



**Disclaimer:**  
**1.** All room dimensions are measured to structural elements and exclude all finishes and construction tolerances. **2.** All dimensions have been provided by our consultant architects. **3.** All materials, dimensions and drawings are approximate. Information is subject to change without notice. **4.** Actual suite area may vary from the stated area. Drawings not to scale. The developer reserves the right to make revisions. **5.** Calculation of suite area is measured as the area bounded by the centre line of the demising or partition walls separating one unit from another unit, the exterior face of all exterior walls, and the exterior face of the corridor wall enclosing the adjoining unit. **6.** Calculation of balcony area is measured as the area bounded by the centre line of the demising or partition walls separating one unit from another unit, the out most face of the enclosing guard and the external face of the unit adjoining the balcony. **7.** The units are measured at typical floor in the building. Columns may vary in size depending on the floor level.



THREE BEDROOM

TYPE 3-3.a

UNIT NO.

1603E, 1703E, 1803E,  
1903E

SUITE AREA

165.4m<sup>2</sup> / 1,780.4ft<sup>2</sup>

BALCONY AREA

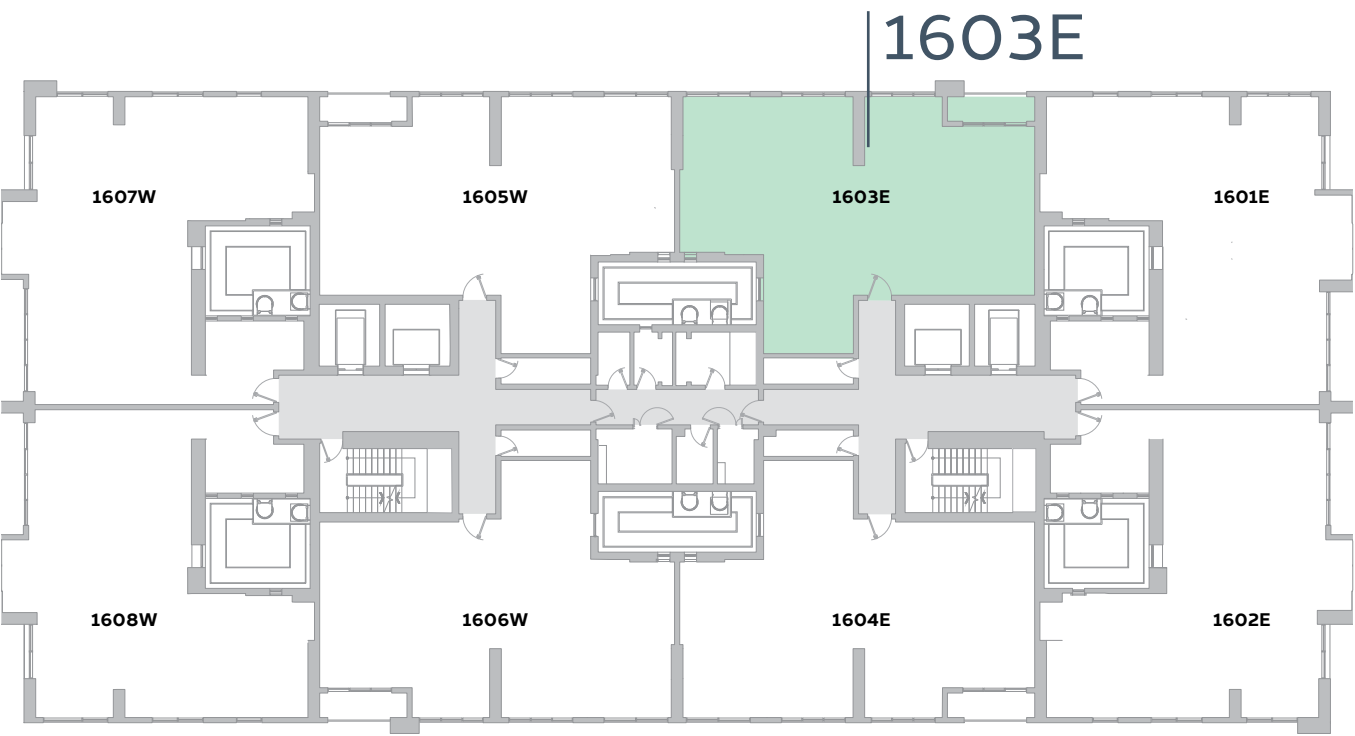
6m<sup>2</sup> / 64.5ft<sup>2</sup>

TOTAL AREA

171.4m<sup>2</sup> / 1,844.9ft<sup>2</sup>



FLOOR 16-19



MASTER PLAN

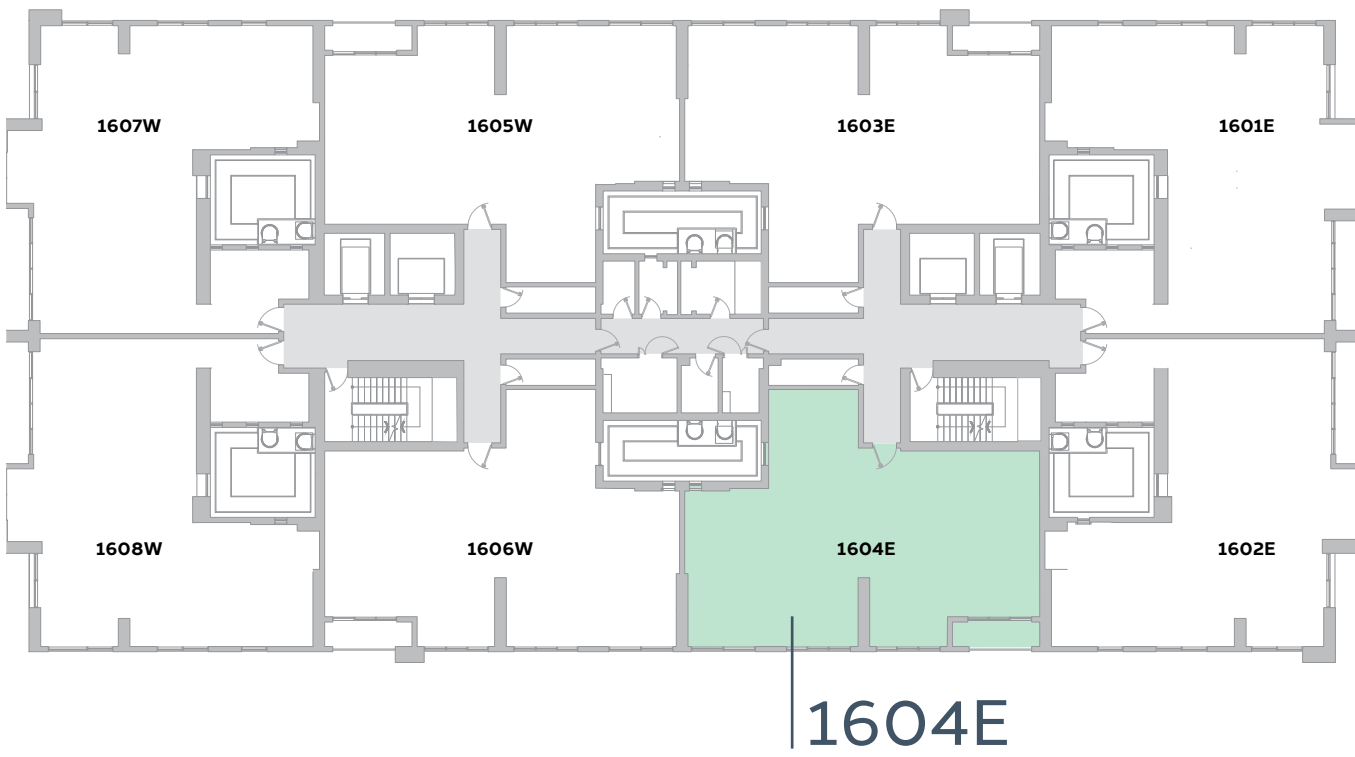




THREE BEDROOM	TYPE 3-3.b
UNIT NO.	1604E, 1704E, 1804E, 1904E
SUITE AREA	164.1m <sup>2</sup> / 1,766.3ft <sup>2</sup>
BALCONY AREA	5.8m <sup>2</sup> / 62.4ft <sup>2</sup>
TOTAL AREA	169.9m <sup>2</sup> / 1828.7ft <sup>2</sup>



FLOOR 16-19



MASTER PLAN



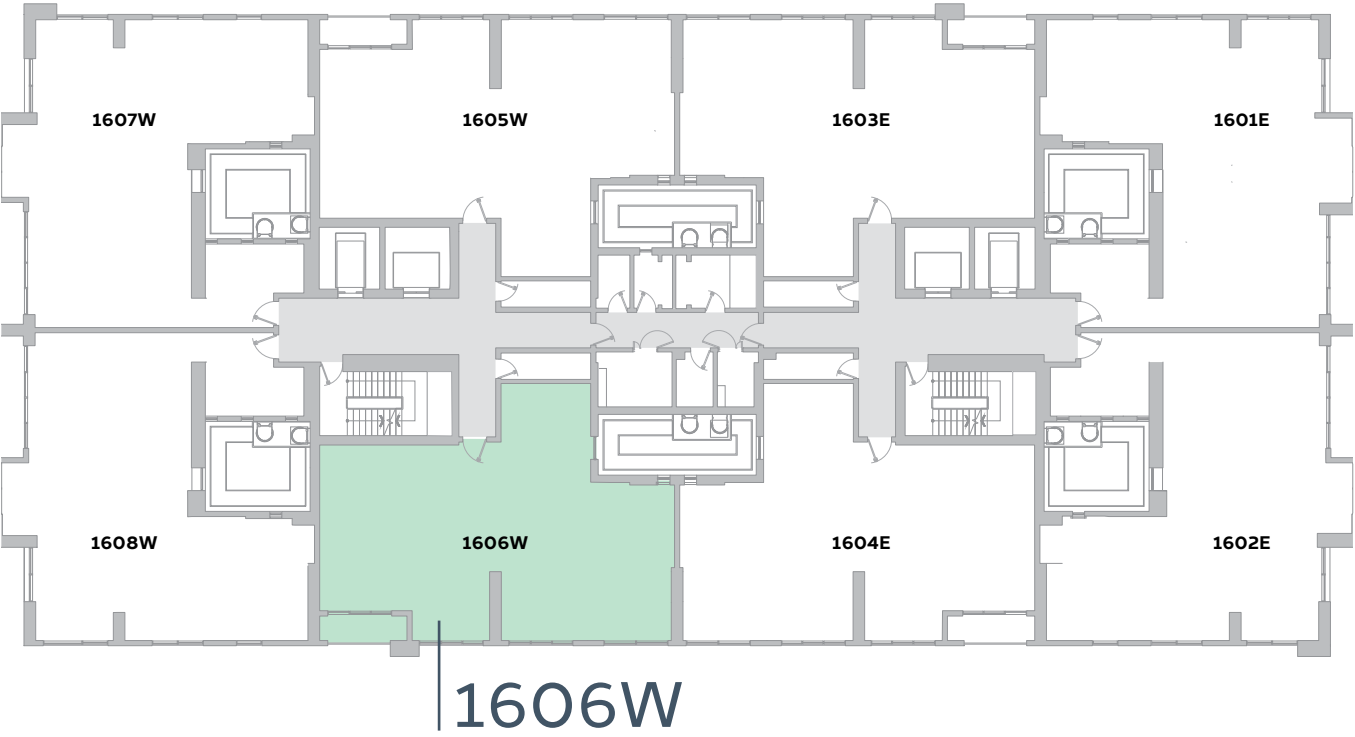
**Disclaimer:**  
1. All room dimensions are measured to structural elements and exclude all finishes and construction tolerances. 2. All dimensions have been provided by our consultant architects. 3. All materials, dimensions and drawings are approximate. Information is subject to change without notice. 4. Actual suite area may vary from the stated area. Drawings not to scale. The developer reserves the right to make revisions. 5. Calculation of suite area is measured as the area bounded by the centre line of the demising or partition walls separating one unit from another unit, the exterior face of all exterior walls, and the exterior face of the corridor wall enclosing the adjoining unit. 6. Calculation of balcony area is measured as the area bounded by the centre line of the demising or partition walls separating one unit from another unit, the out most face of the enclosing guard and the external face of the unit adjoining the balcony. 7. The units are measured at typical floor in the building. Columns may vary in size depending on the floor level.



THREE BEDROOM	<b>TYPE 3-3.c</b>
UNIT NO.	1606W, 1706W, 1806W, 1906W
SUITE AREA	<b>164.3m<sup>2</sup> / 1,768.5ft<sup>2</sup></b>
BALCONY AREA	<b>5.9m<sup>2</sup> / 63.5ft<sup>2</sup></b>
TOTAL AREA	<b>170.2m<sup>2</sup> / 1,832ft<sup>2</sup></b>



FLOOR 16-19



MASTER PLAN

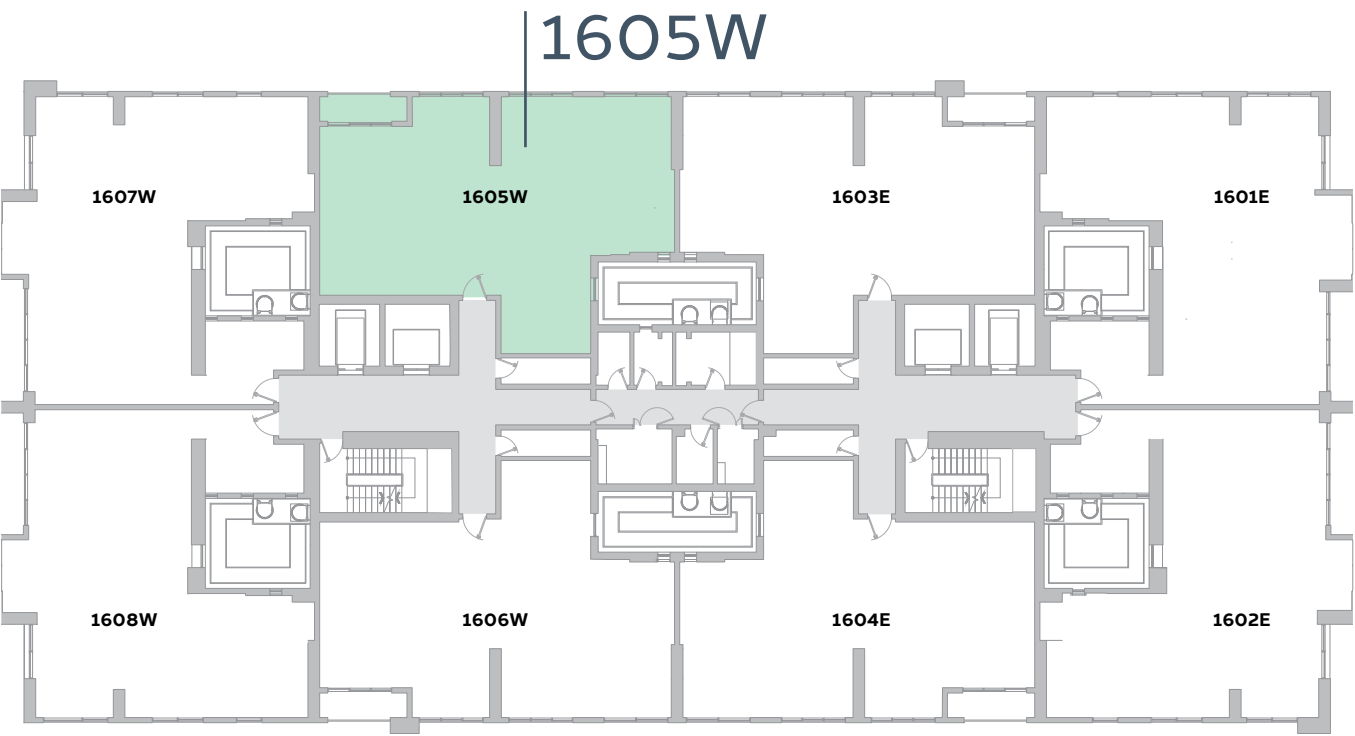




THREE BEDROOM	TYPE 3-3.d
UNIT NO.	1605W, 1705W, 1805W, 1905W
SUITE AREA	165.3m <sup>2</sup> / 1,779.3ft <sup>2</sup>
BALCONY AREA	5.9m <sup>2</sup> / 63.5ft <sup>2</sup>
TOTAL AREA	171.3m <sup>2</sup> / 1843.8ft <sup>2</sup>



FLOOR 16-19



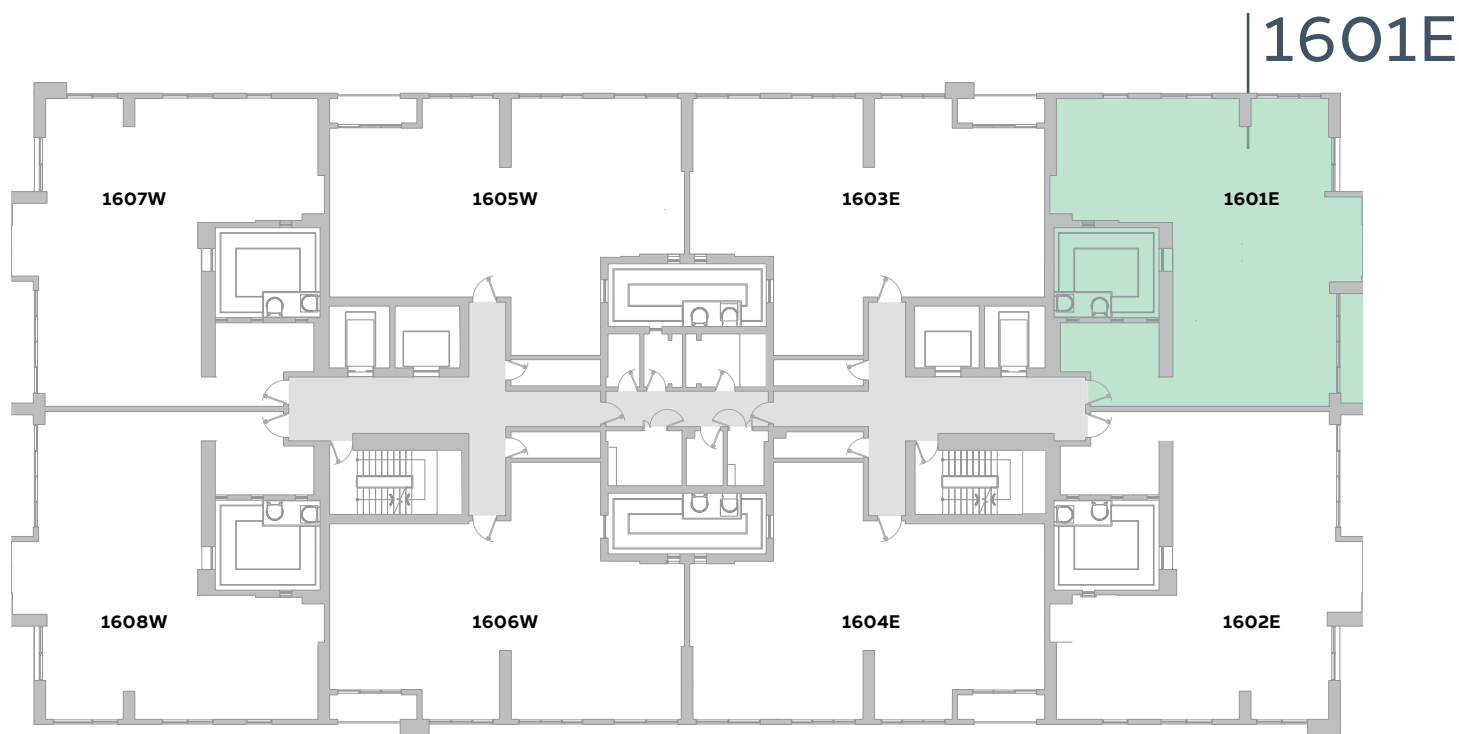
MASTER PLAN





FOUR BEDROOM	TYPE 4-1. a
UNIT NO.	1601E, 1701E, 1801E, 1901E
SUITE AREA	181.8m <sup>2</sup> / 1956.8ft <sup>2</sup>
BALCONY AREA	8m <sup>2</sup> / 86.1ft <sup>2</sup>
TOTAL AREA	189.8m <sup>2</sup> / 2042.9ft <sup>2</sup>

FLOOR 16-19



MASTER PLAN

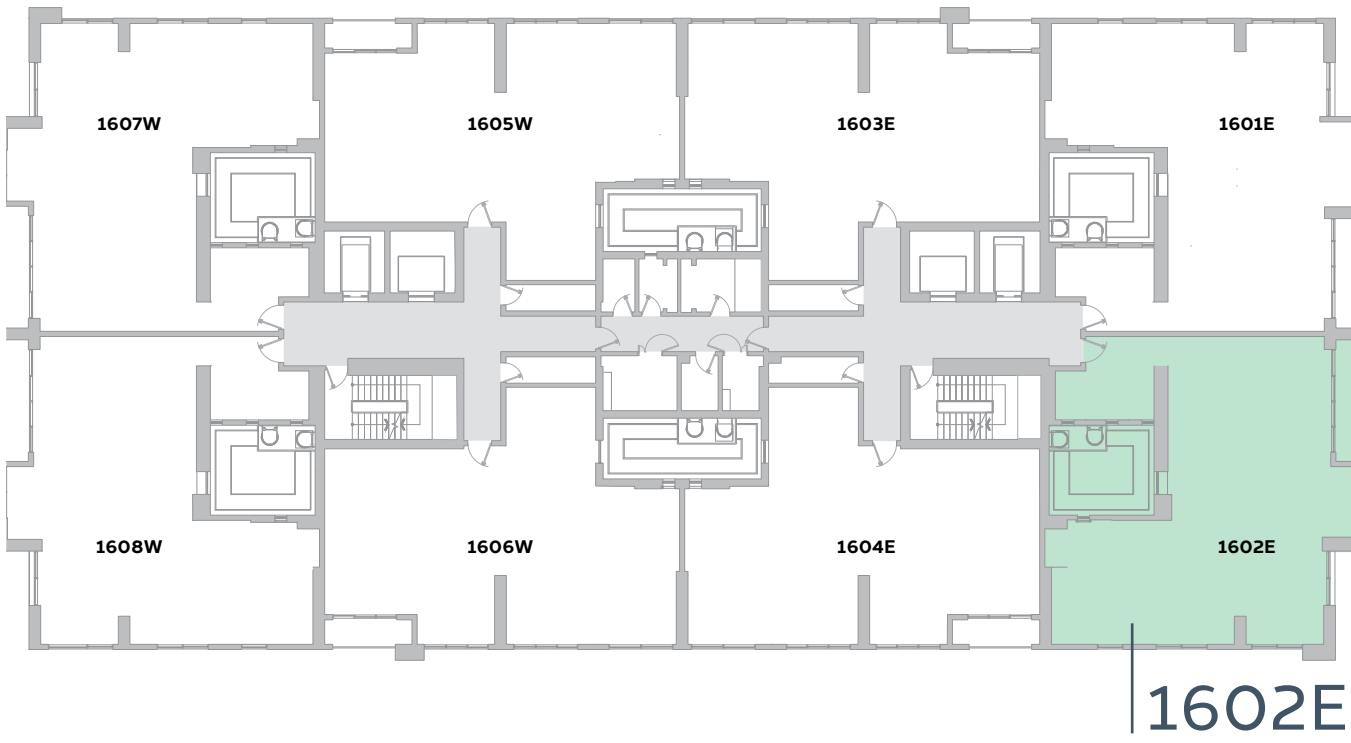


**Disclaimer:**  
**1.** All room dimensions are measured to structural elements and exclude all finishes and construction tolerances. **2.** All dimensions have been provided by our consultant architects. **3.** All materials, dimensions and drawings are approximate. Information is subject to change without notice. **4.** Actual suite area may vary from the stated area. Drawings not to scale. The developer reserves the right to make revisions. **5.** Calculation of suite area is measured as the area bounded by the centre line of the demising or partition walls separating one unit from another unit, the exterior face of all exterior walls, and the exterior face of the corridor wall enclosing the adjoining unit. **6.** Calculation of balcony area is measured as the area bounded by the centre line of the demising or partition walls separating one unit from another unit, the out most face of the enclosing guard and the external face of the unit adjoining the balcony. **7.** The units are measured at typical floor in the building. Columns may vary in size depending on the floor level.



FOUR BEDROOM	<b>TYPE 4-1. b</b>
UNIT NO.	1602E, 1702E, 1802E, 1902E
SUITE AREA	<b>180.9m<sup>2</sup> / 1,947.1ft<sup>2</sup></b>
BALCONY AREA	<b>8.9m<sup>2</sup> / 95.8ft<sup>2</sup></b>
TOTAL AREA	<b>189.8m<sup>2</sup> / 2,042.9ft<sup>2</sup></b>

FLOOR 16-19



MASTER PLAN

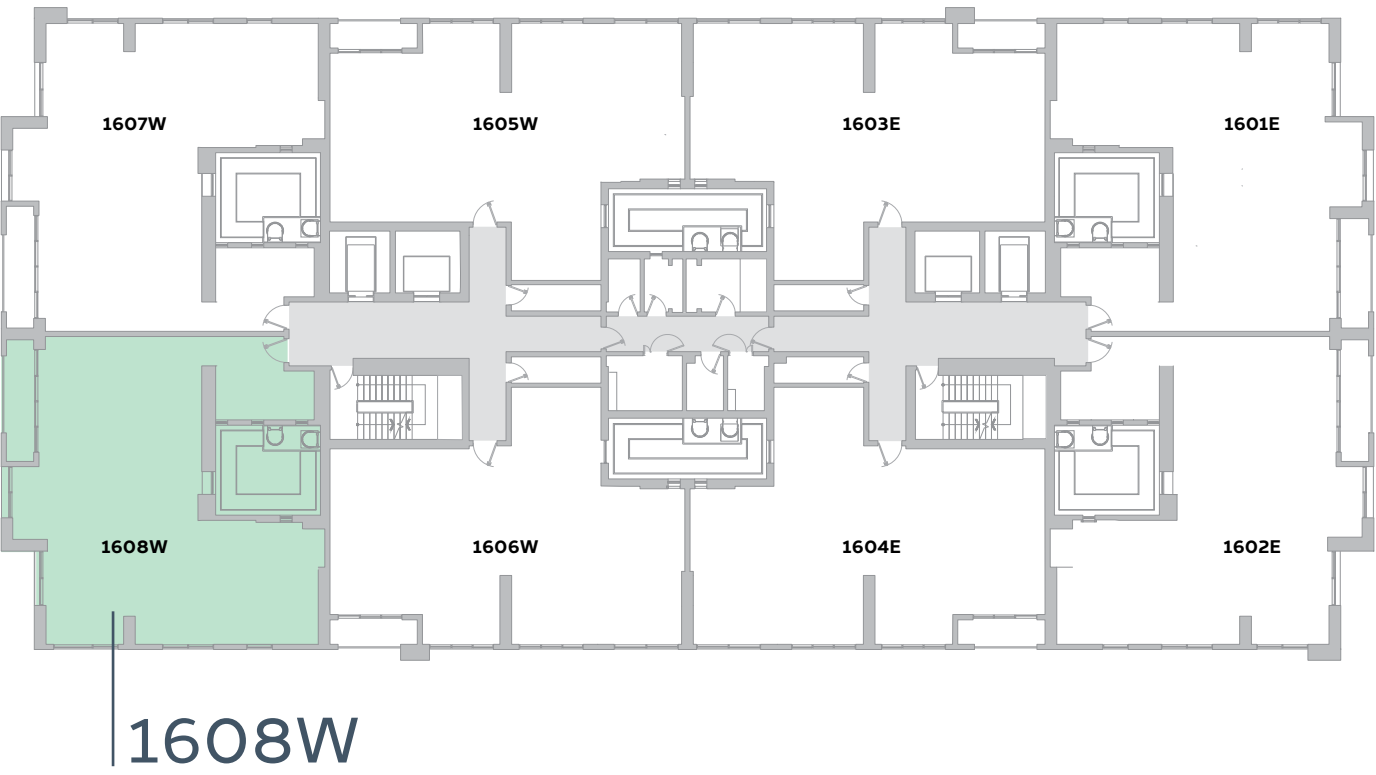


**Disclaimer:**  
**1.** All room dimensions are measured to structural elements and exclude all finishes and construction tolerances. **2.** All dimensions have been provided by our consultant architects. **3.** All materials, dimensions and drawings are approximate. Information is subject to change without notice. **4.** Actual suite area may vary from the stated area. Drawings not to scale. The developer reserves the right to make revisions. **5.** Calculation of suite area is measured as the area bounded by the centre line of the demising or partition walls separating one unit from another unit, the exterior face of all exterior walls, and the exterior face of the corridor wall enclosing the adjoining unit. **6.** Calculation of balcony area is measured as the area bounded by the centre line of the demising or partition walls separating one unit from another unit, the out most face of the enclosing guard and the external face of the unit adjoining the balcony. **7.** The units are measured at typical floor in the building. Columns may vary in size depending on the floor level.



FOUR BEDROOM	TYPE 4-1. c
UNIT NO.	1608W, 1708E, 1808E, 1908E
SUITE AREA	181.1m2 / 1,949.3ft²
BALCONY AREA	8.9m² / 95.8ft²
TOTAL AREA	190m² / 2,045.1ft²

FLOOR 16-19



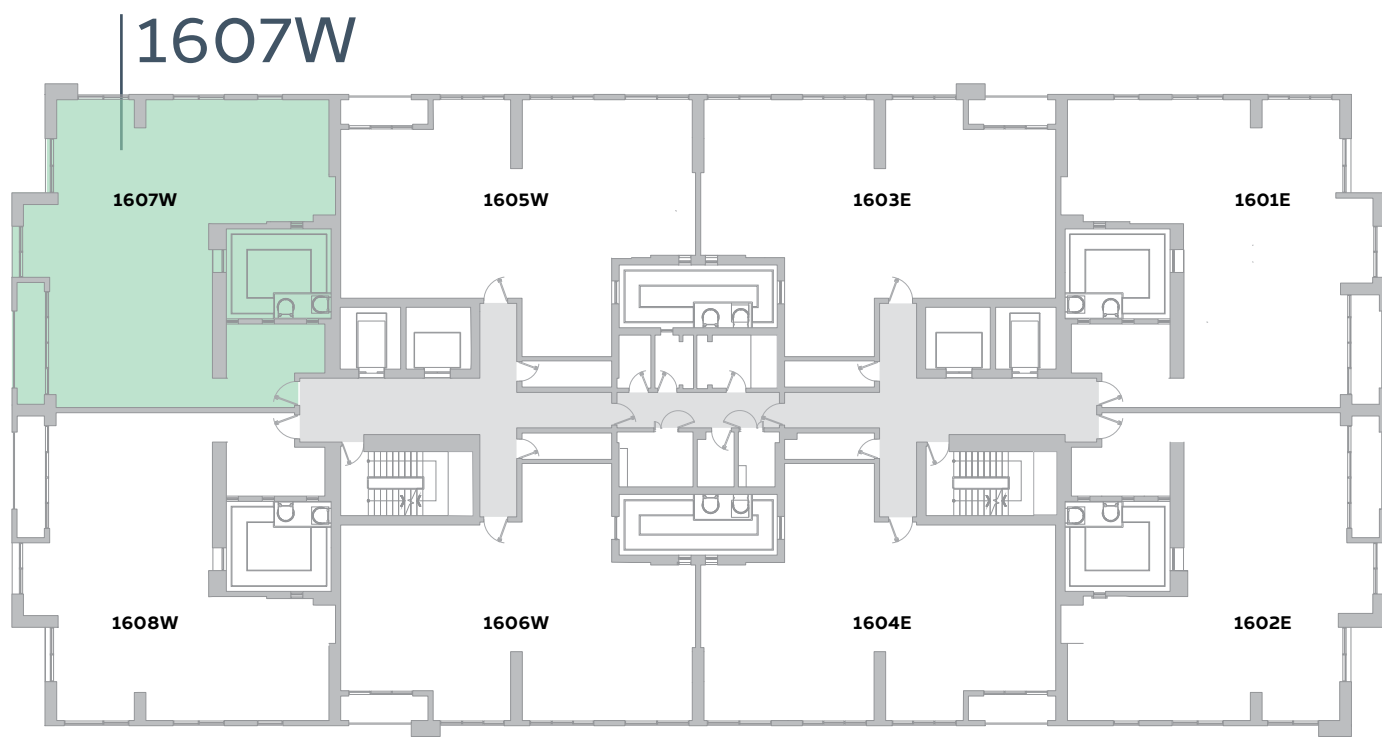
MASTER PLAN





FOUR BEDROOM	TYPE 4-1. d
UNIT NO.	1607W, 1707W, 1807W, 1907W
SUITE AREA	180.9m <sup>2</sup> / 1,947.1ft <sup>2</sup>
BALCONY AREA	8.9m <sup>2</sup> / 95.8ft <sup>2</sup>
TOTAL AREA	189.8m <sup>2</sup> / 2042.9ft <sup>2</sup>

FLOOR 16-19



MASTER PLAN



**Disclaimer:**  
**1.** All room dimensions are measured to structural elements and exclude all finishes and construction tolerances. **2.** All dimensions have been provided by our consultant architects. **3.** All materials, dimensions and drawings are approximate. Information is subject to change without notice. **4.** Actual suite area may vary from the stated area. Drawings not to scale. The developer reserves the right to make revisions. **5.** Calculation of suite area is measured as the area bounded by the centre line of the demising or partition walls separating one unit from another unit, the exterior face of all exterior walls, and the exterior face of the corridor wall enclosing the adjoining unit. **6.** Calculation of balcony area is measured as the area bounded by the centre line of the demising or partition walls separating one unit from another unit, the out most face of the enclosing guard and the external face of the unit adjoining the balcony. **7.** The units are measured at typical floor in the building. Columns may vary in size depending on the floor level.



THREE BEDROOM

**TYPE 3-3.a**

UNIT NO.

2003E

SUITE AREA

**166.1m<sup>2</sup> / 1,787.9ft<sup>2</sup>**

BALCONY &  
TERRACE AREA

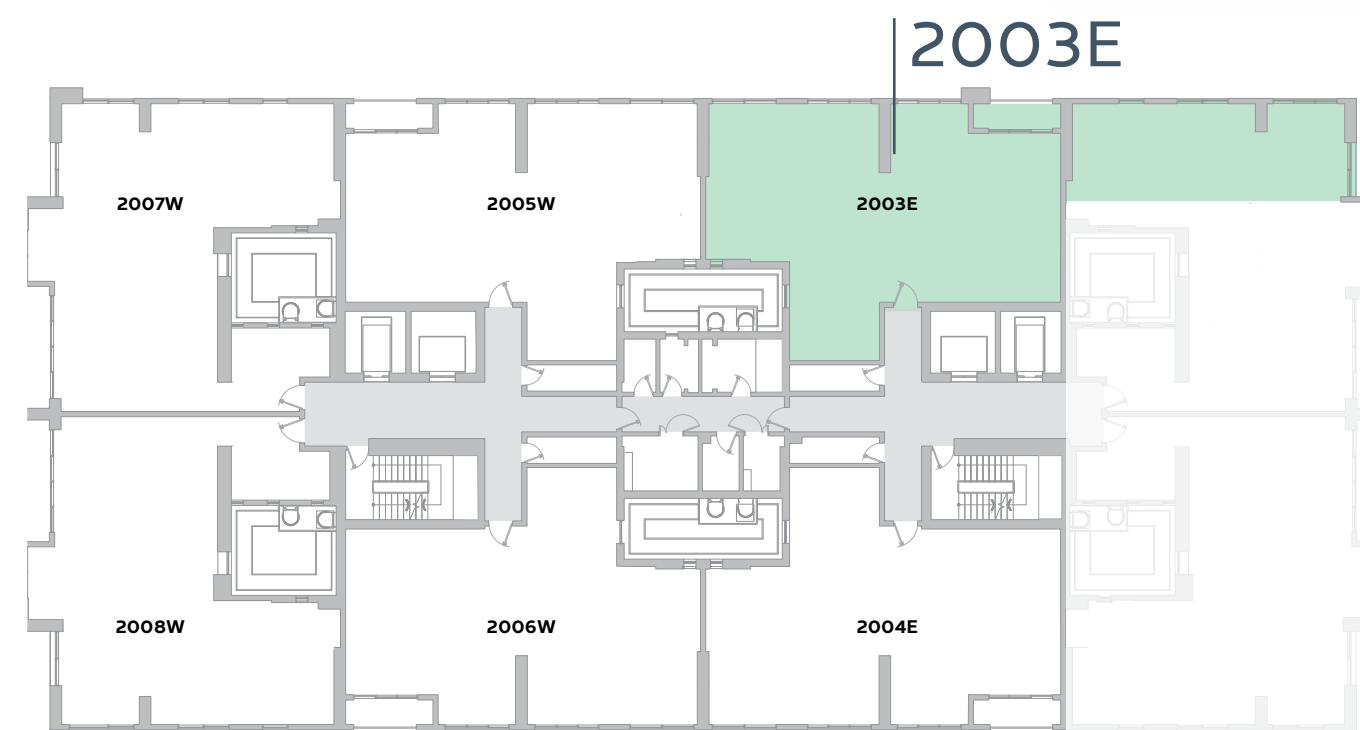
**66.2m<sup>2</sup> / 712.6ft<sup>2</sup>**

TOTAL AREA

**232.3m<sup>2</sup> / 2,500.5ft<sup>2</sup>**



FLOOR 20



**Disclaimer:**

1. All room dimensions are measured to structural elements and exclude all finishes and construction tolerances. 2. All dimensions have been provided by our consultant architects. 3. All materials, dimensions and drawings are approximate. Information is subject to change without notice. 4. Actual suite area may vary from the stated area. Drawings not to scale. The developer reserves the right to make revisions. 5. Calculation of suite area is measured as the area bounded by the centre line of the demising or partition walls separating one unit from another unit, the exterior face of all exterior walls, and the exterior face of the corridor wall enclosing the adjoining unit. 6. Calculation of balcony area is measured as the area bounded by the centre line of the demising or partition walls separating one unit from another unit, the out most face of the enclosing guard and the external face of the unit adjoining the balcony. 7. The units are measured at typical floor in the building. Columns may vary in size depending on the floor level.



THREE BEDROOM	TYPE 3-3.b
UNIT NO.	2004E
SUITE AREA	164.8m <sup>2</sup> / 1,773.9ft <sup>2</sup>
BALCONY & TERRACE AREA	66.9m <sup>2</sup> / 720.1ft <sup>2</sup>
TOTAL AREA	231.7m <sup>2</sup> / 2,494ft <sup>2</sup>



FLOOR 20





**Disclaimer:**

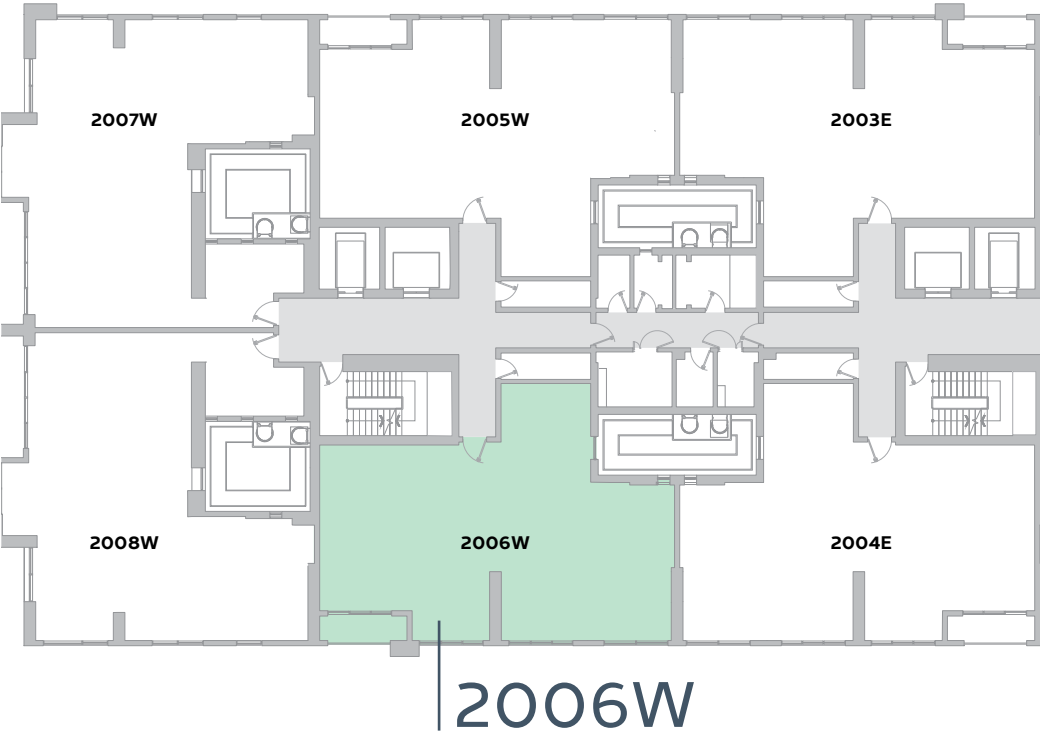
**1.** All room dimensions are measured to structural elements and exclude all finishes and construction tolerances. **2.** All dimensions have been provided by our consultant architects. **3.** All materials, dimensions and drawings are approximate. Information is subject to change without notice. **4.** Actual suite area may vary from the stated area. Drawings not to scale. The developer reserves the right to make revisions. **5.** Calculation of suite area is measured as the area bounded by the centre line of the demising or partition walls separating one unit from another unit, the exterior face of all exterior walls, and the exterior face of the corridor wall enclosing the adjoining unit. **6.** Calculation of balcony area is measured as the area bounded by the centre line of the demising or partition walls separating one unit from another unit, the out most face of the enclosing guard and the external face of the unit adjoining the balcony. **7.** The units are measured at typical floor in the building. Columns may vary in size depending on the floor level.



THREE BEDROOM	TYPE 3-3.c
UNIT NO.	2006W, 2106W
SUITE AREA	164.4m <sup>2</sup> / 1,769.5ft <sup>2</sup>
BALCONY AREA	5.9m <sup>2</sup> / 63.5ft <sup>2</sup>
TOTAL AREA	170.3m <sup>2</sup> / 1,833ft <sup>2</sup>



FLOOR 20-21



MASTER PLAN



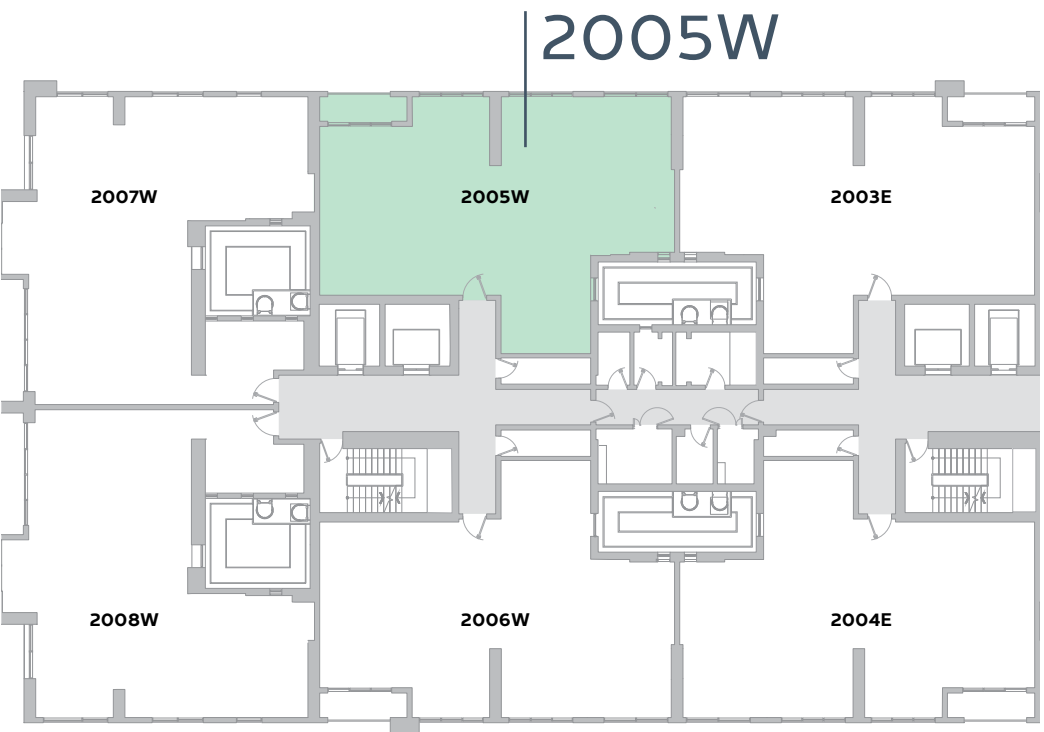
**Disclaimer:**  
1. All room dimensions are measured to structural elements and exclude all finishes and construction tolerances. 2. All dimensions have been provided by our consultant architects. 3. All materials, dimensions and drawings are approximate. Information is subject to change without notice. 4. Actual suite area may vary from the stated area. Drawings not to scale. The developer reserves the right to make revisions. 5. Calculation of suite area is measured as the area bounded by the centre line of the demising or partition walls separating one unit from another unit, the exterior face of all exterior walls, and the exterior face of the corridor wall enclosing the adjoining unit. 6. Calculation of balcony area is measured as the area bounded by the centre line of the demising or partition walls separating one unit from another unit, the out most face of the enclosing guard and the external face of the unit adjoining the balcony. 7. The units are measured at typical floor in the building. Columns may vary in size depending on the floor level.



THREE BEDROOM	TYPE 3-3.d
UNIT NO.	2005W, 2105W
SUITE AREA	165.3m <sup>2</sup> / 1,779.2ft <sup>2</sup>
BALCONY AREA	5.9m <sup>2</sup> / 63.5ft <sup>2</sup>
TOTAL AREA	171.2m <sup>2</sup> / 1,842.7ft <sup>2</sup>



FLOOR 20-21



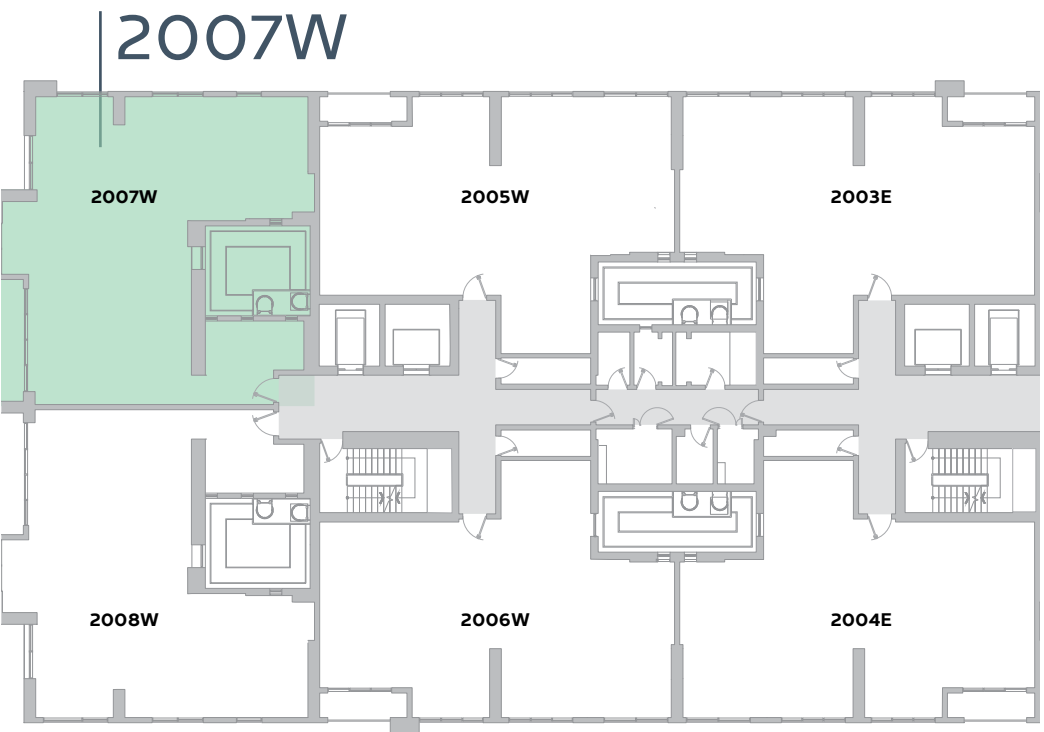
MASTER PLAN





FOUR BEDROOM	TYPE 4-1. d
UNIT NO.	2007W, 2107W
SUITE AREA	180.2m <sup>2</sup> / 1,939.6ft <sup>2</sup>
BALCONY AREA	8.9m <sup>2</sup> / 95.8ft <sup>2</sup>
TOTAL AREA	189.1m <sup>2</sup> / 2,035.4ft <sup>2</sup>

FLOOR 20-21



MASTER PLAN

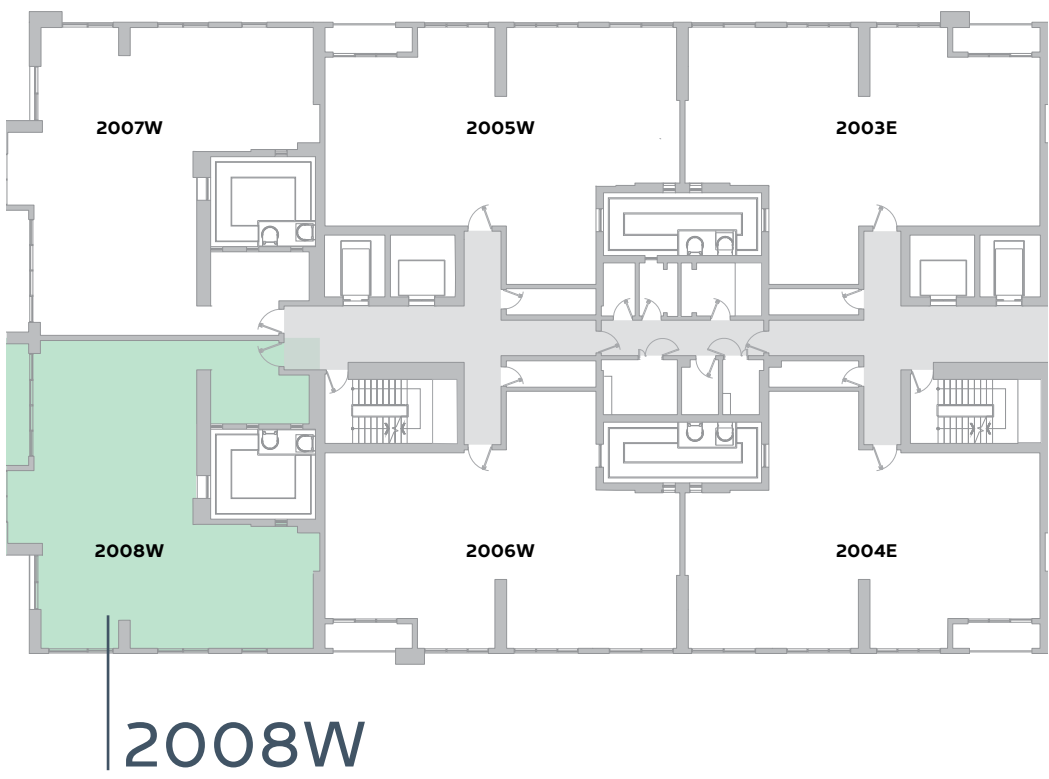


**Disclaimer:**  
**1.** All room dimensions are measured to structural elements and exclude all finishes and construction tolerances. **2.** All dimensions have been provided by our consultant architects. **3.** All materials, dimensions and drawings are approximate. Information is subject to change without notice. **4.** Actual suite area may vary from the stated area. Drawings not to scale. The developer reserves the right to make revisions. **5.** Calculation of suite area is measured as the area bounded by the centre line of the demising or partition walls separating one unit from another unit, the exterior face of all exterior walls, and the exterior face of the corridor wall enclosing the adjoining unit. **6.** Calculation of balcony area is measured as the area bounded by the centre line of the demising or partition walls separating one unit from another unit, the out most face of the enclosing guard and the external face of the unit adjoining the balcony. **7.** The units are measured at typical floor in the building. Columns may vary in size depending on the floor level.

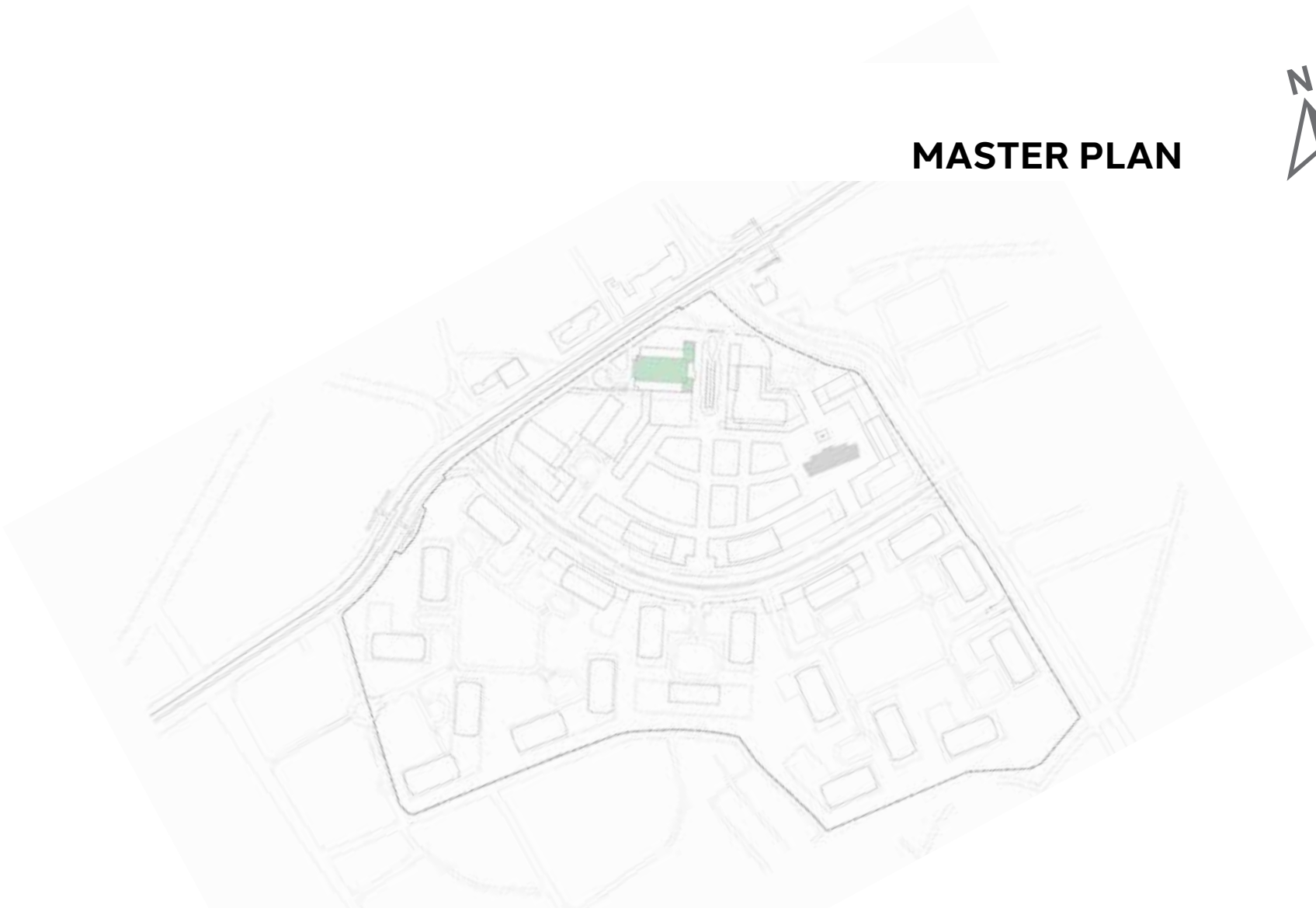


FOUR BEDROOM	TYPE 4-1. c
UNIT NO.	2008W, 2108W
SUITE AREA	180.2m <sup>2</sup> / 1,939.6ft <sup>2</sup>
BALCONY AREA	8.9m <sup>2</sup> / 95.8ft <sup>2</sup>
TOTAL AREA	189.1m <sup>2</sup> / 2,035.4ft <sup>2</sup>

FLOOR 20-21



MASTER PLAN



**Disclaimer:**  
**1.** All room dimensions are measured to structural elements and exclude all finishes and construction tolerances. **2.** All dimensions have been provided by our consultant architects. **3.** All materials, dimensions and drawings are approximate. Information is subject to change without notice. **4.** Actual suite area may vary from the stated area. Drawings not to scale. The developer reserves the right to make revisions. **5.** Calculation of suite area is measured as the area bounded by the centre line of the demising or partition walls separating one unit from another unit, the exterior face of all exterior walls, and the exterior face of the corridor wall enclosing the adjoining unit. **6.** Calculation of balcony area is measured as the area bounded by the centre line of the demising or partition walls separating one unit from another unit, the out most face of the enclosing guard and the external face of the unit adjoining the balcony. **7.** The units are measured at typical floor in the building. Columns may vary in size depending on the floor level.



THREE BEDROOM

TYPE 3-3.a

UNIT NO.

2103E

SUITE AREA

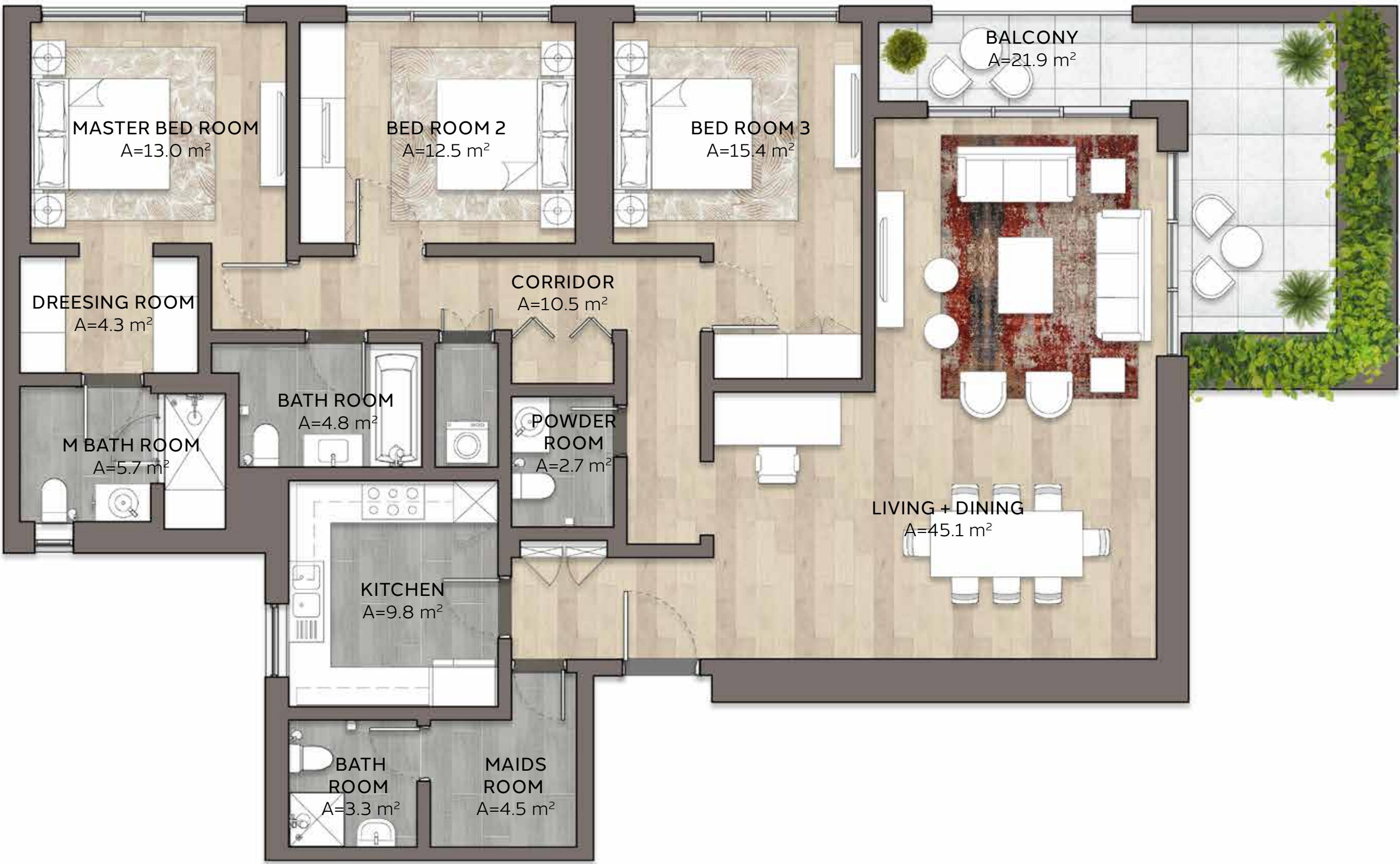
166.1m<sup>2</sup> / 1,787.9ft<sup>2</sup>

BALCONY &  
TERRACE AREA

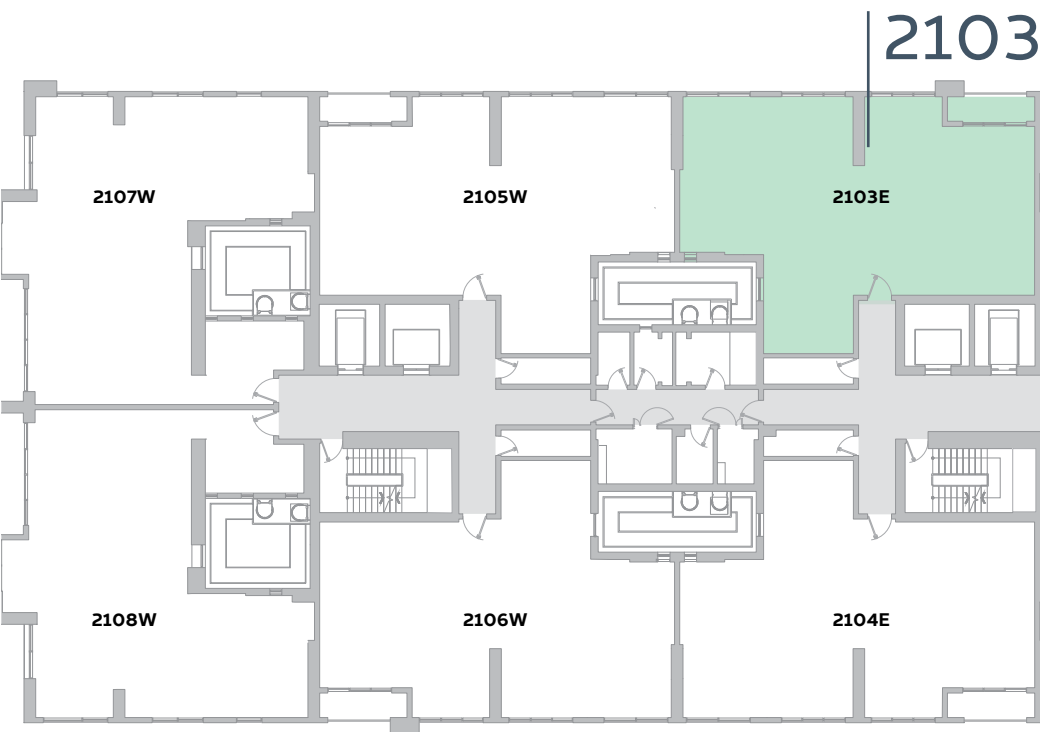
21.9m<sup>2</sup> / 235.7ft<sup>2</sup>

TOTAL AREA

188m<sup>2</sup> / 2,023.6ft<sup>2</sup>



FLOOR 21



MASTER PLAN





THREE BEDROOM	TYPE 3-3.b
UNIT NO.	2104E
SUITE AREA	164.8m <sup>2</sup> / 1,773.9ft <sup>2</sup>
BALCONY & TERRACE AREA	21.9m <sup>2</sup> / 236ft <sup>2</sup>
TOTAL AREA	186.7m <sup>2</sup> / 2,009.9ft <sup>2</sup>



FLOOR 21





MASTER PLAN





**Disclaimer:**

**1.** All room dimensions are measured to structural elements and exclude all finishes and construction tolerances. **2.** All dimensions have been provided by our consultant architects. **3.** All materials, dimensions and drawings are approximate. Information is subject to change without notice. **4.** Actual suite area may vary from the stated area. Drawings not to scale. The developer reserves the right to make revisions. **5.** Calculation of suite area is measured as the area bounded by the centre line of the demising or partition walls separating one unit from another unit, the exterior face of all exterior walls, and the exterior face of the corridor wall enclosing the adjoining unit. **6.** Calculation of balcony area is measured as the area bounded by the centre line of the demising or partition walls separating one unit from another unit, the out most face of the enclosing guard and the external face of the unit adjoining the balcony. **7.** The units are measured at typical floor in the building. Columns may vary in size depending on the floor level.